

**More Roots Mean
More Stormwater
Management**



What Why How Where History Resources

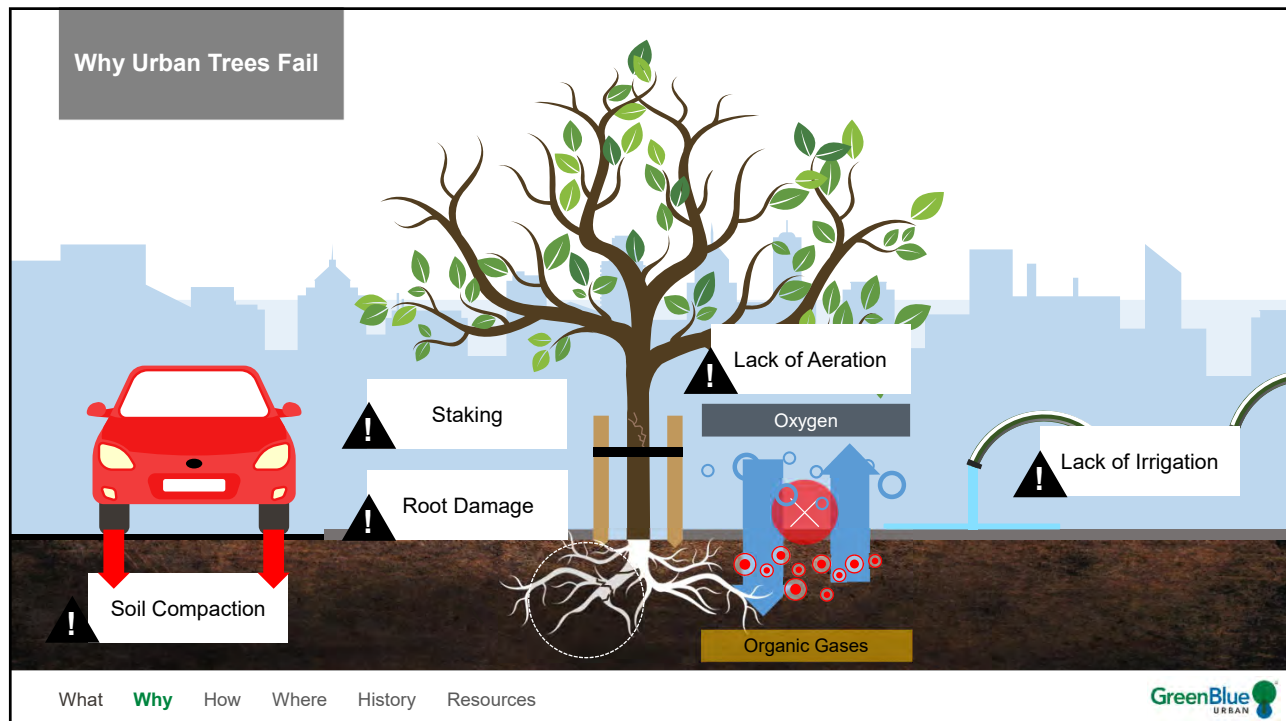
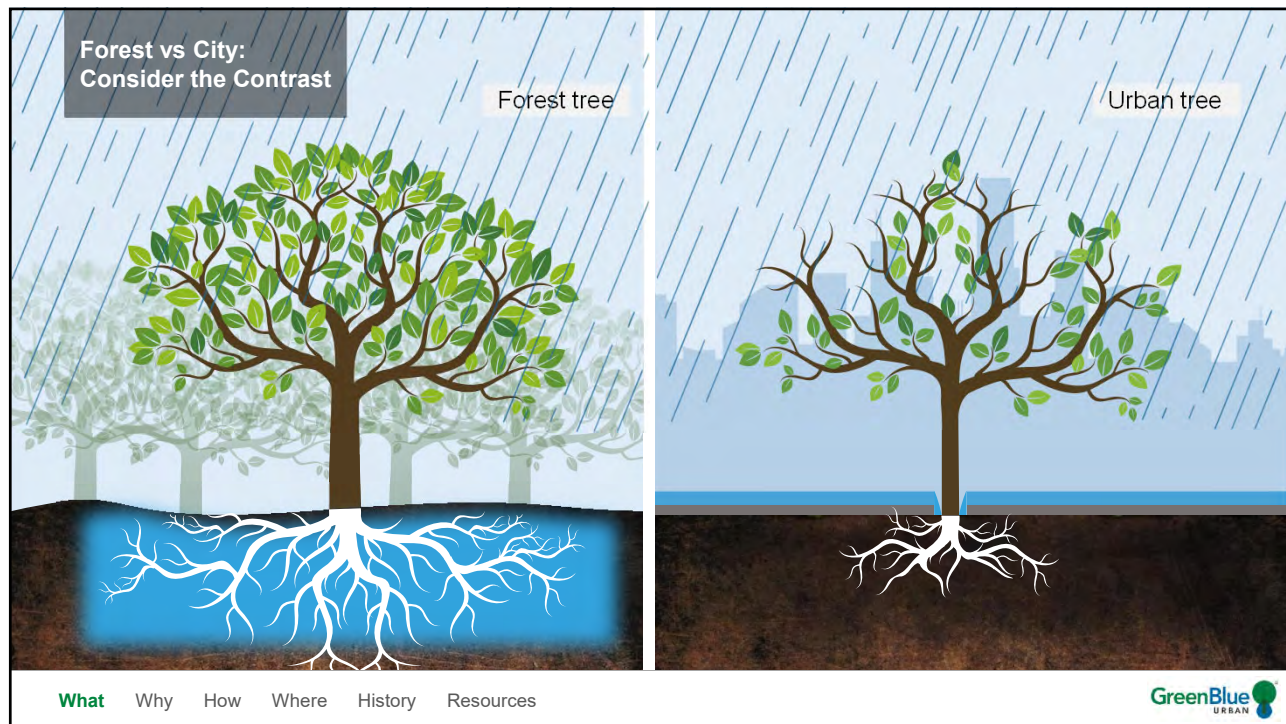


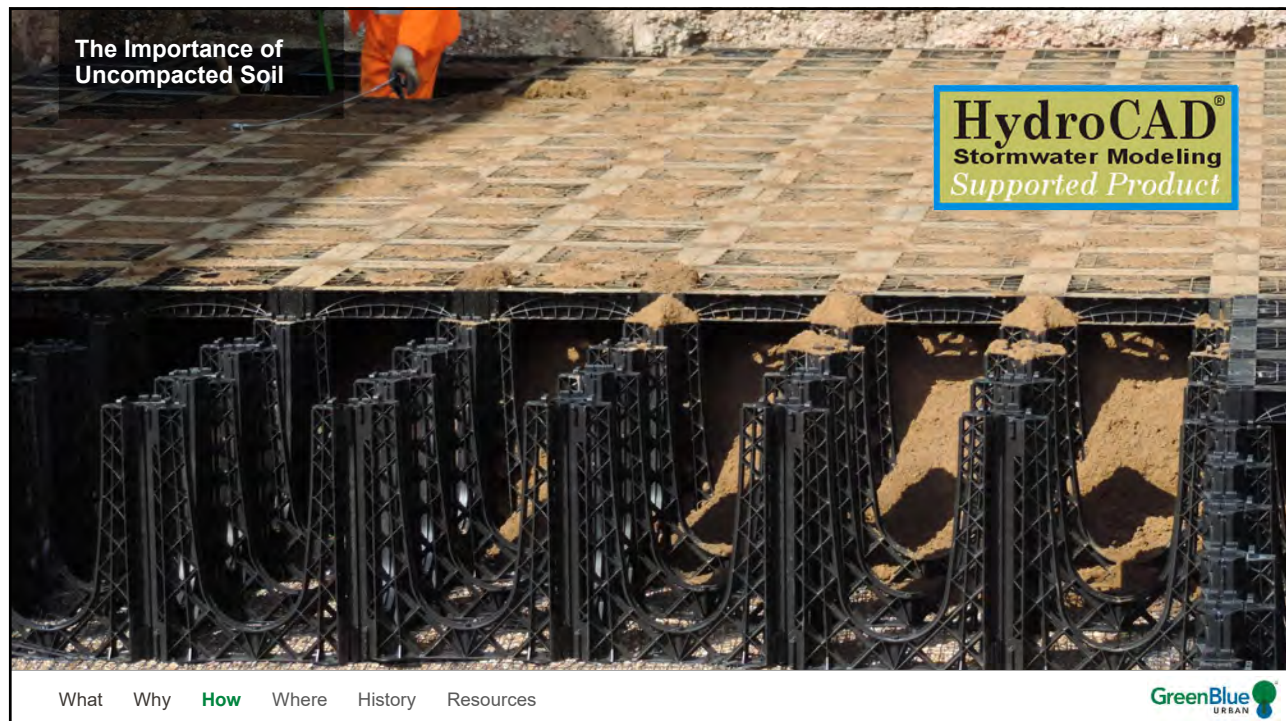
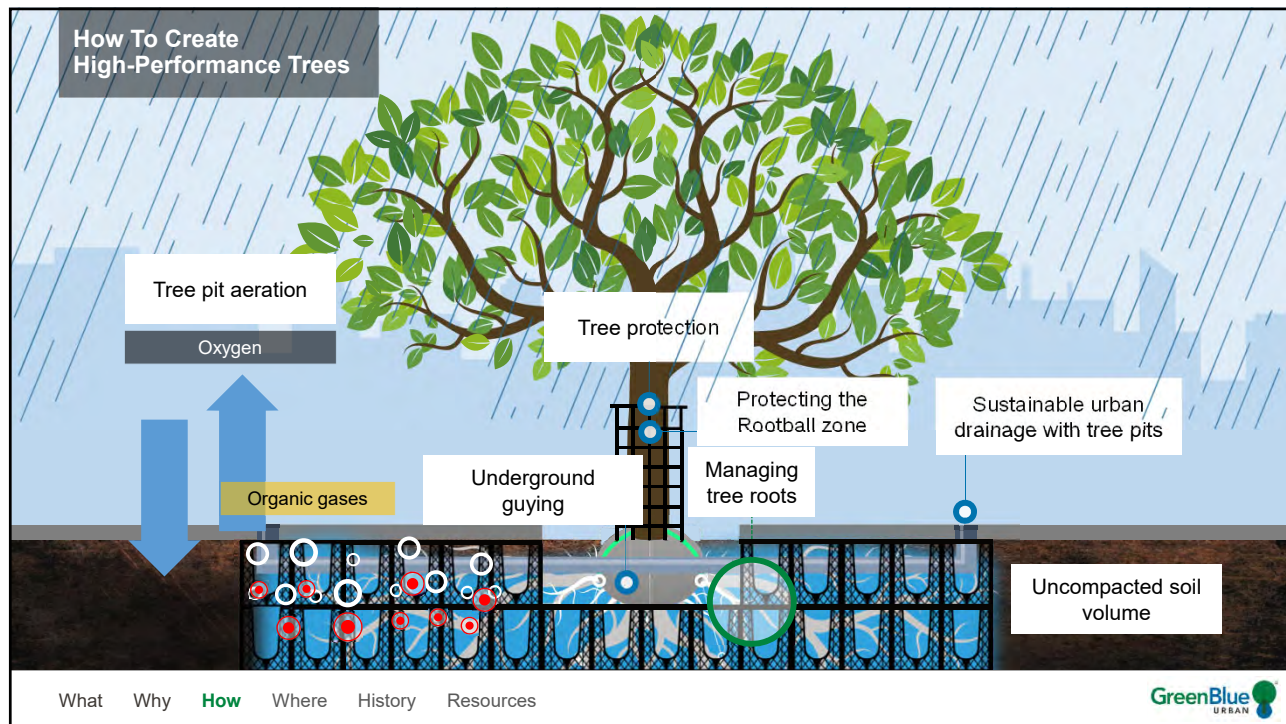
**More Roots Mean
More Stormwater
Management**

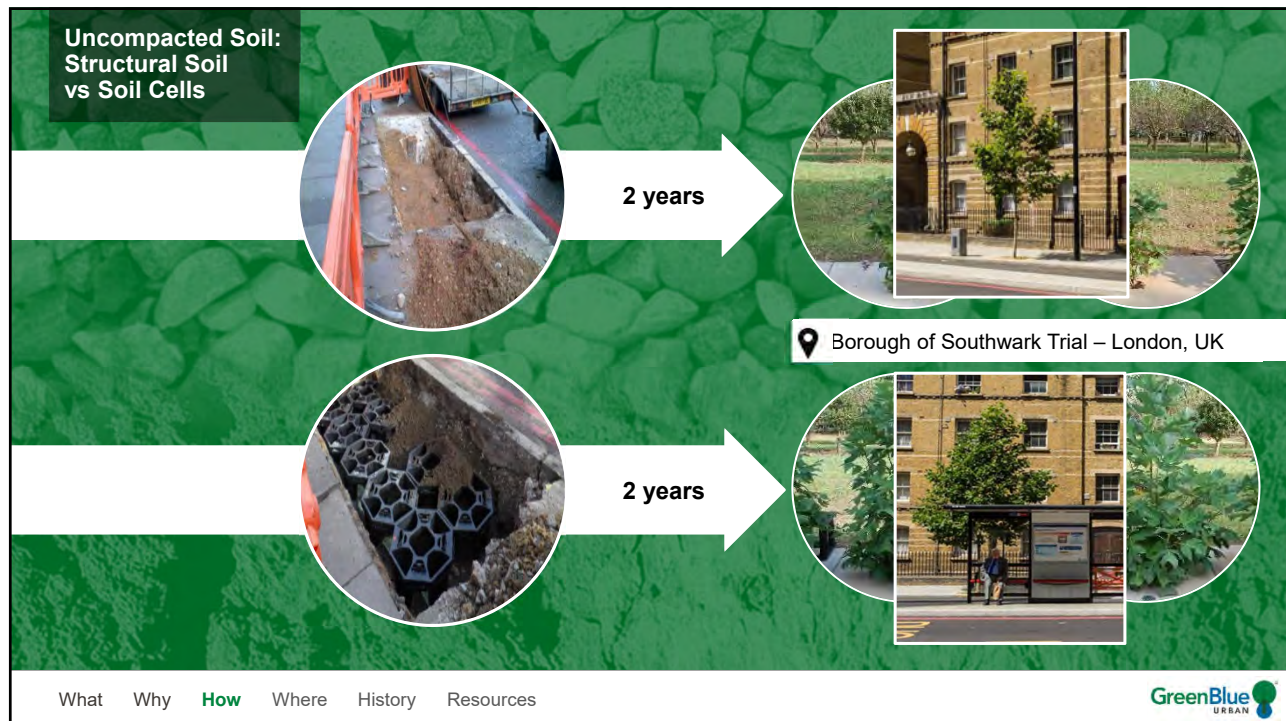
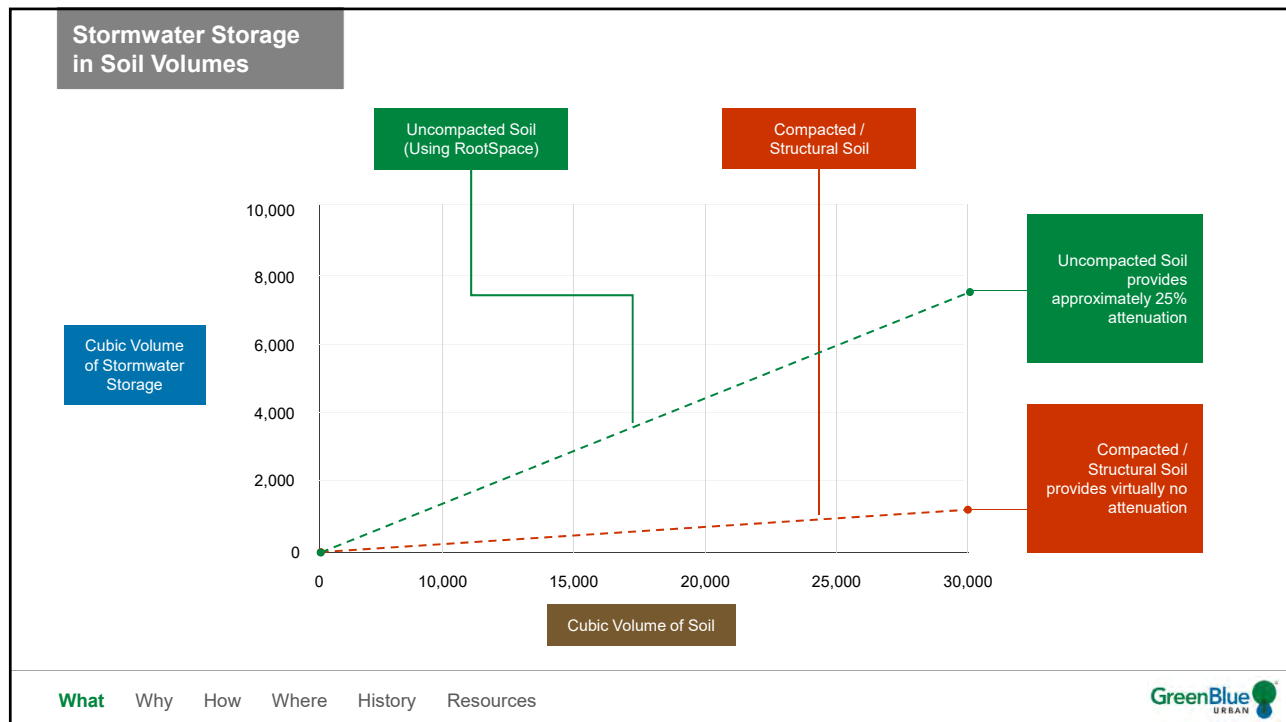


What Why How Where History Resources

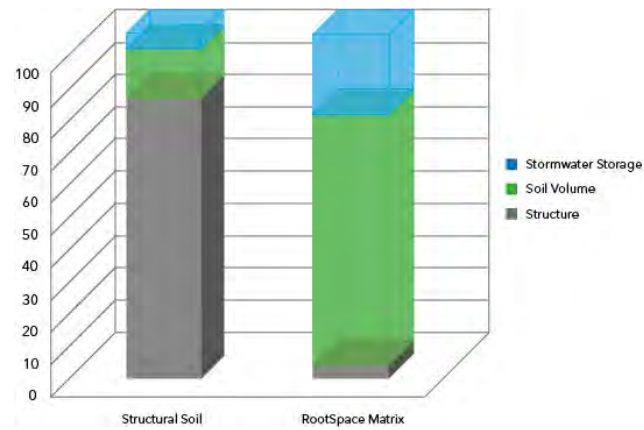








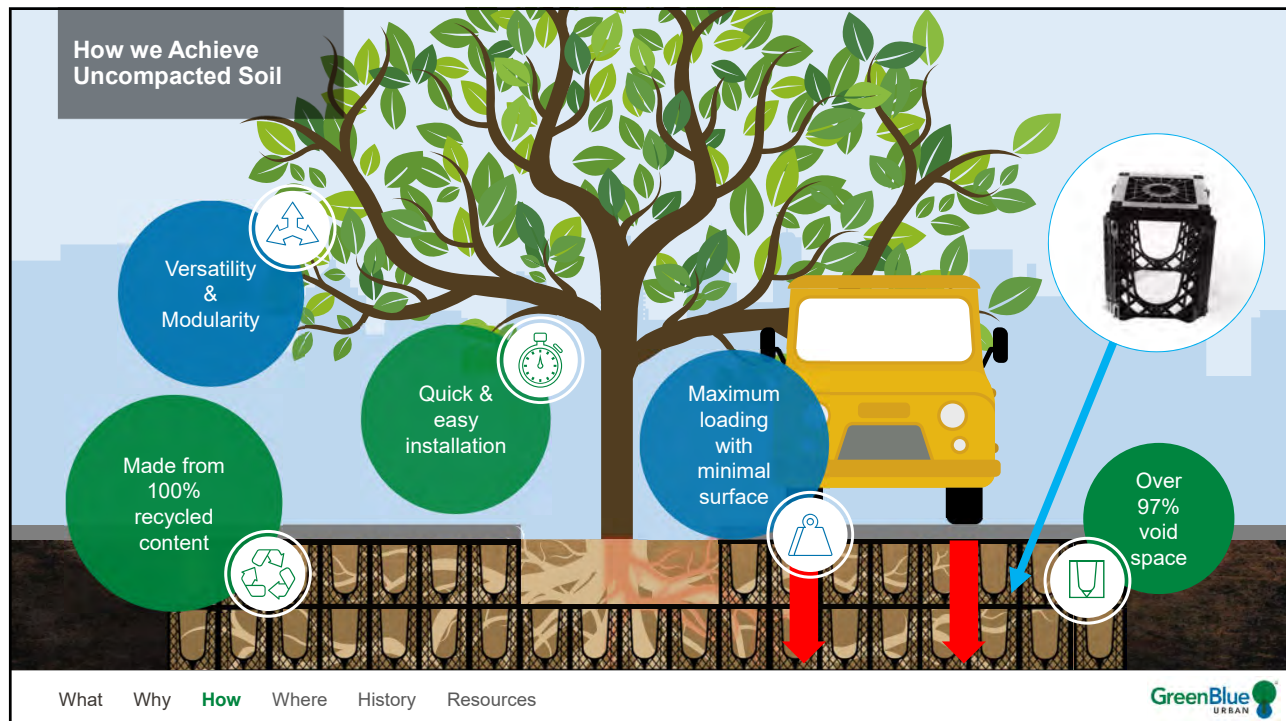
Uncompacted Soil: Structural Soil vs Soil Cells



What Why **How** Where History Resources

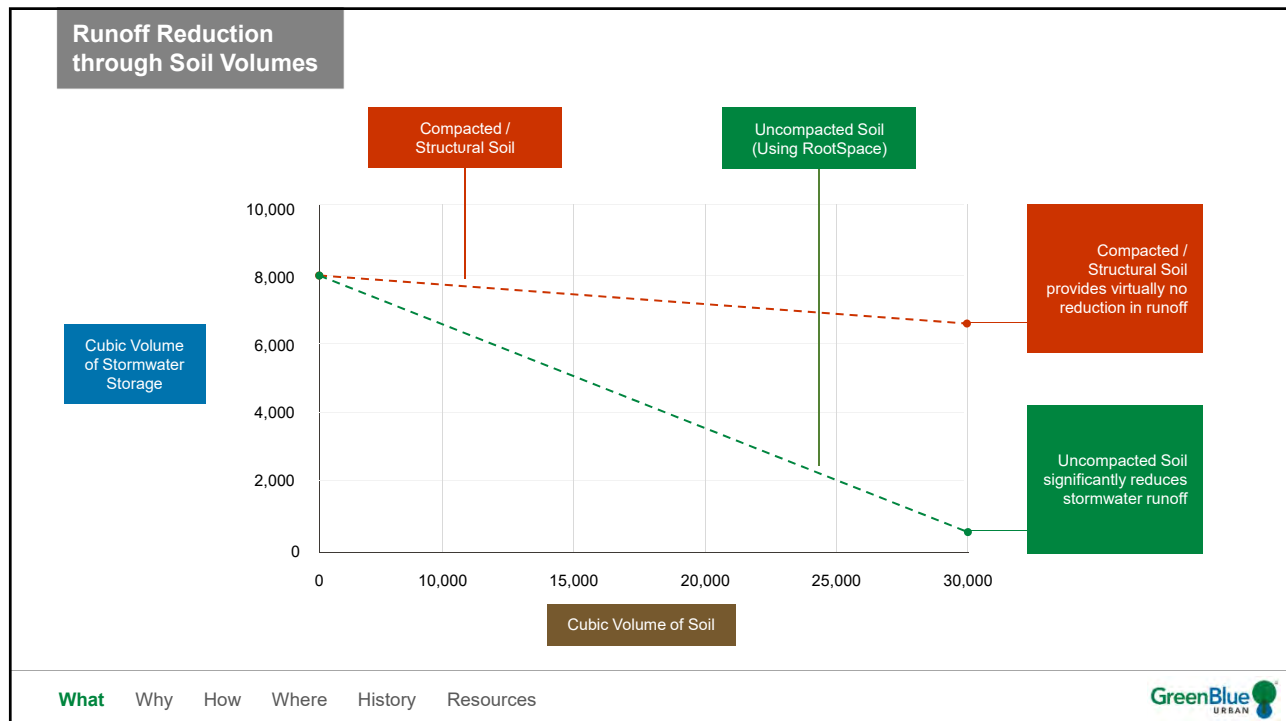
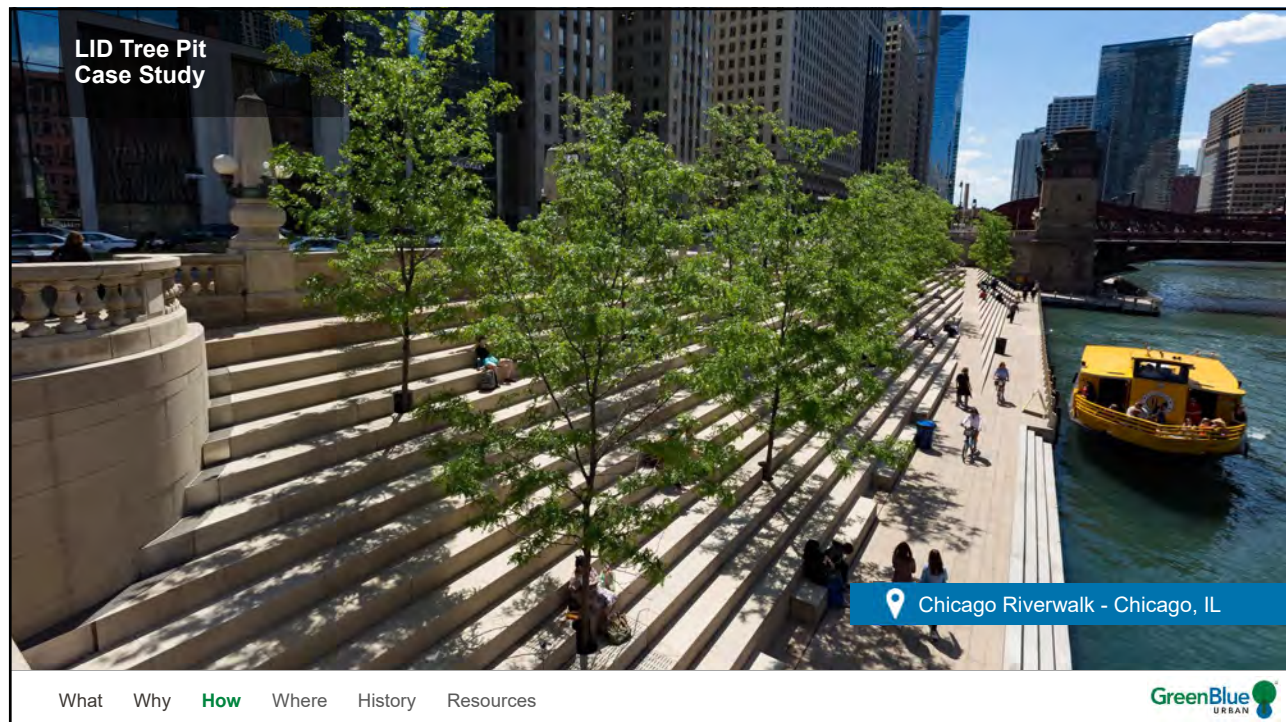


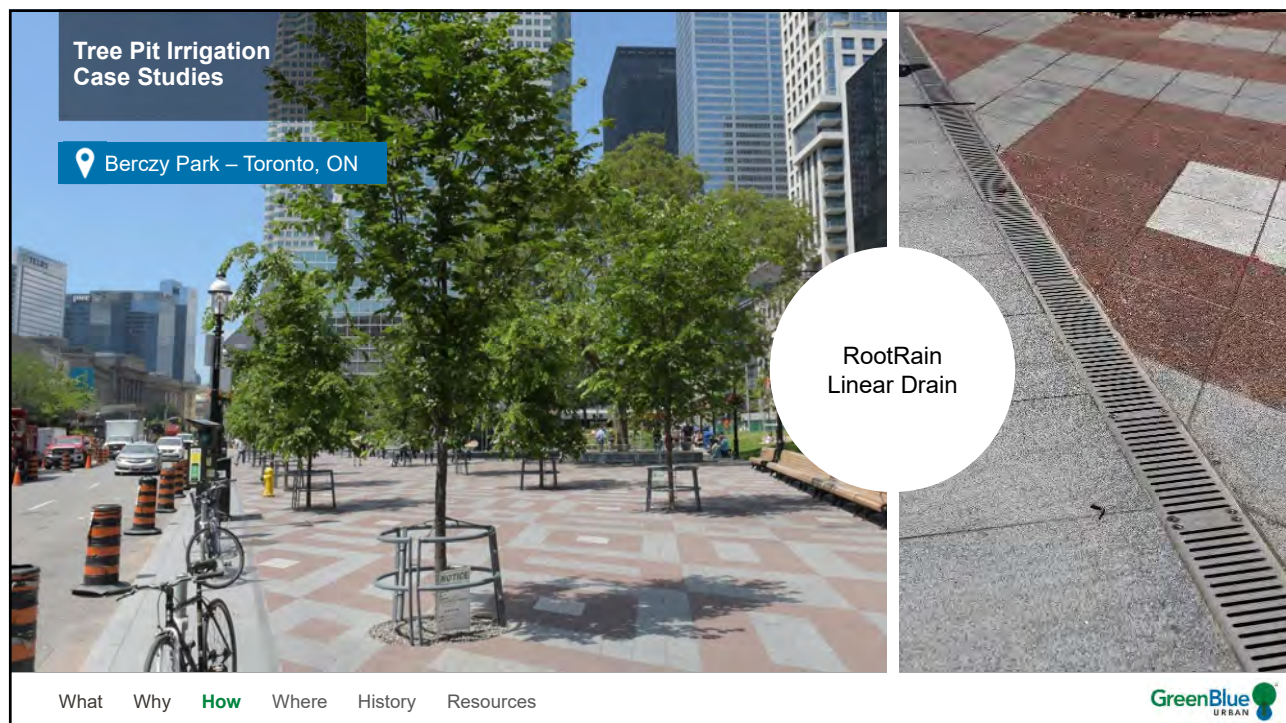
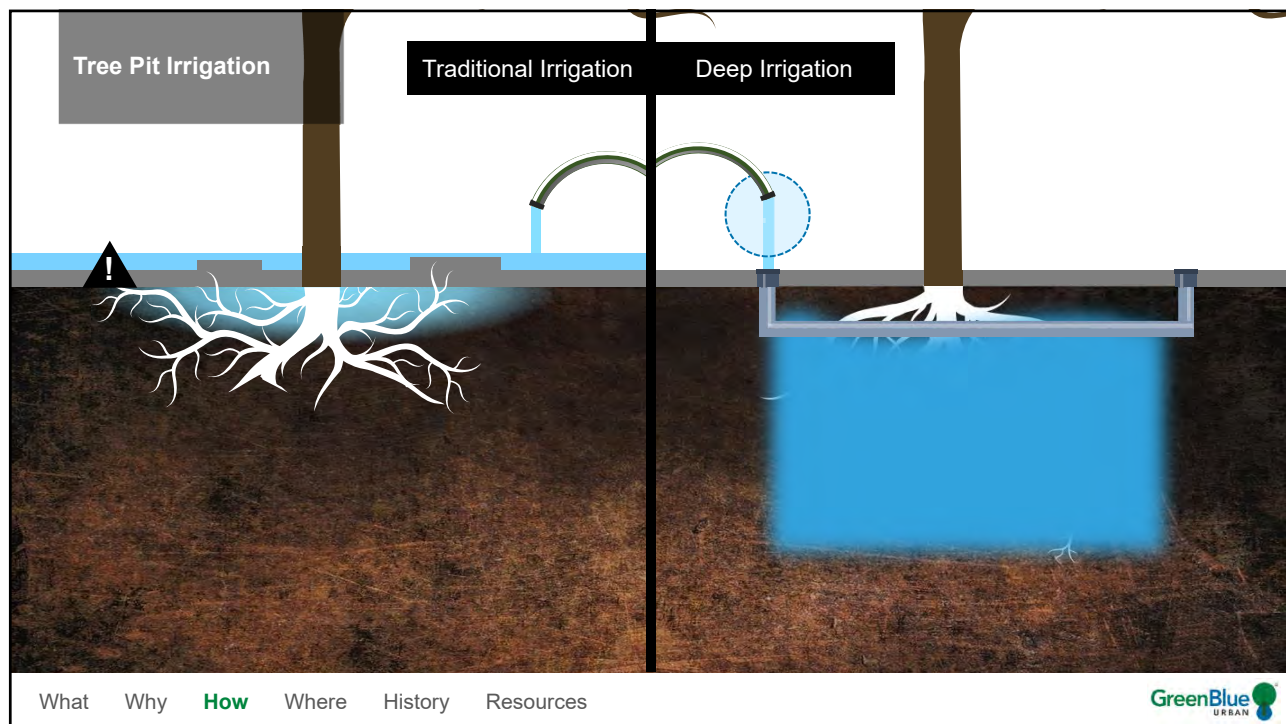
How we Achieve Uncompacted Soil

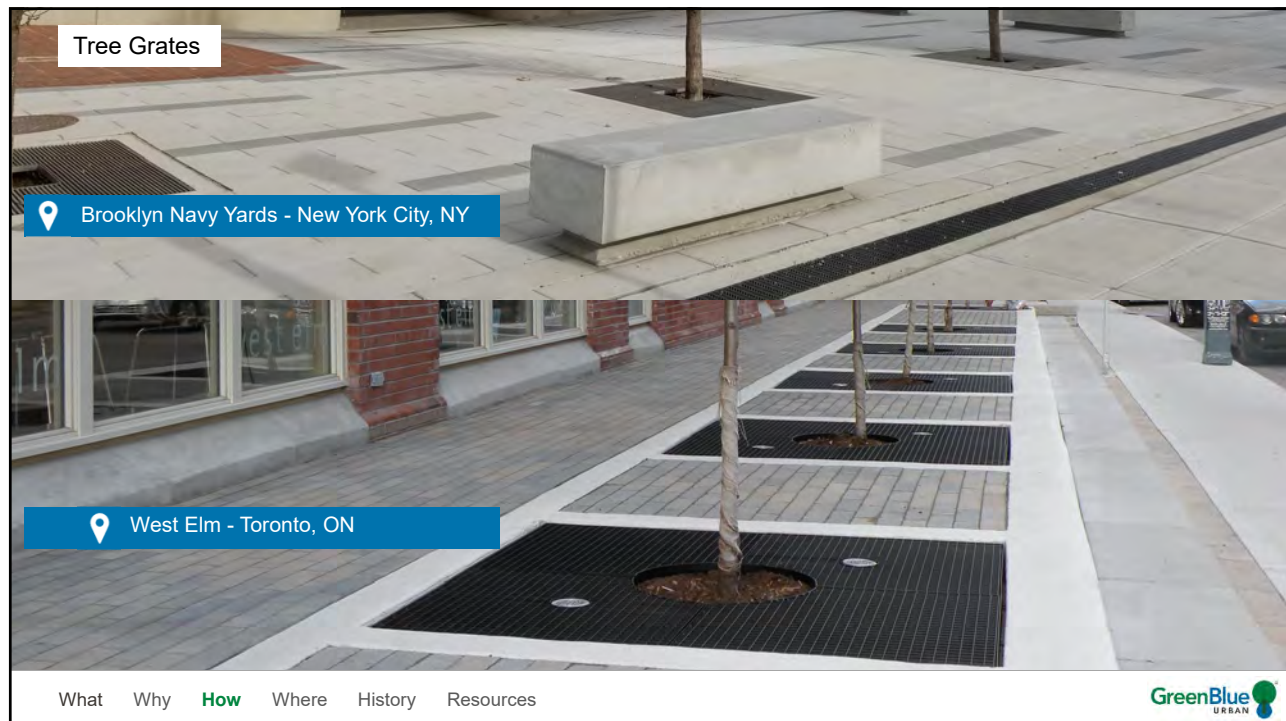
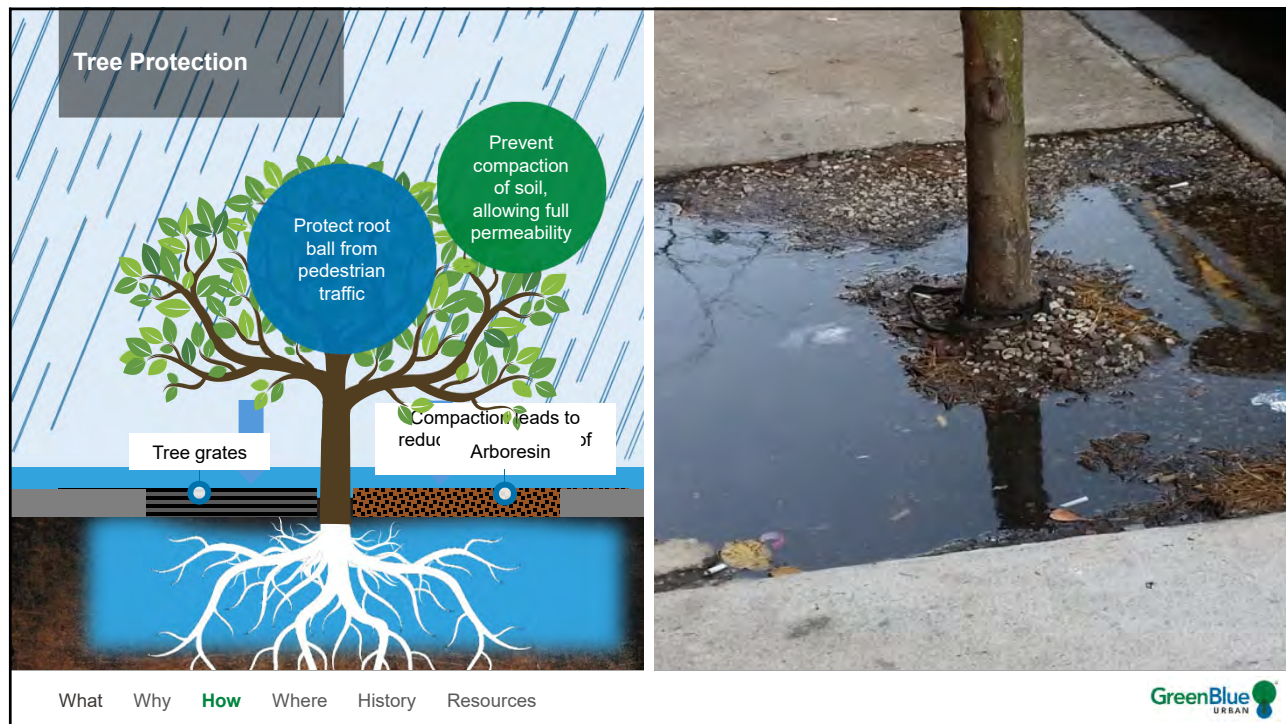


What Why **How** Where History Resources











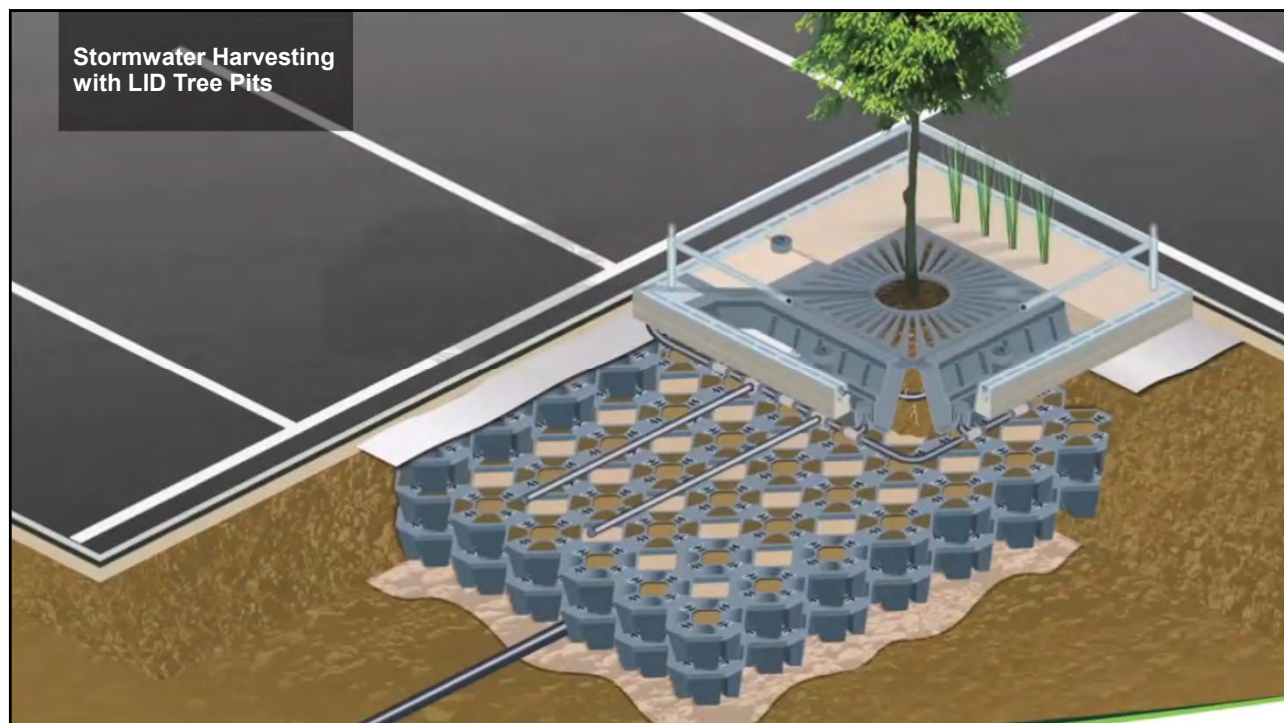


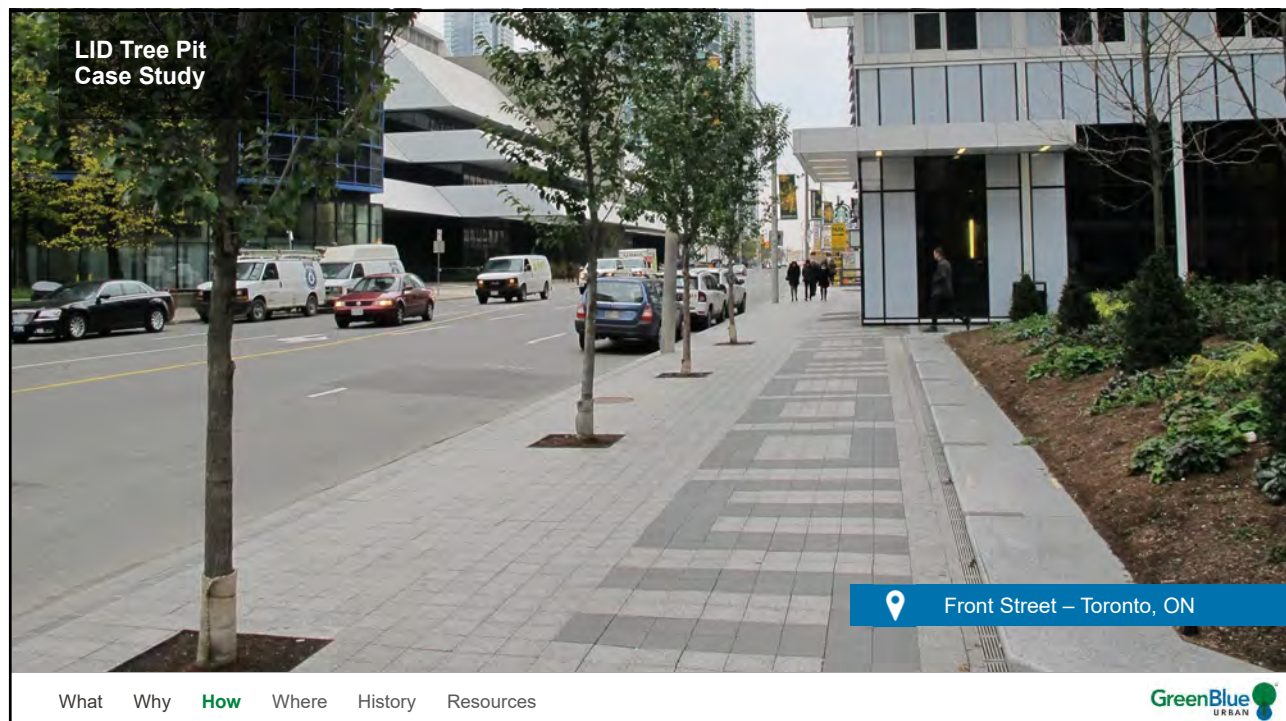
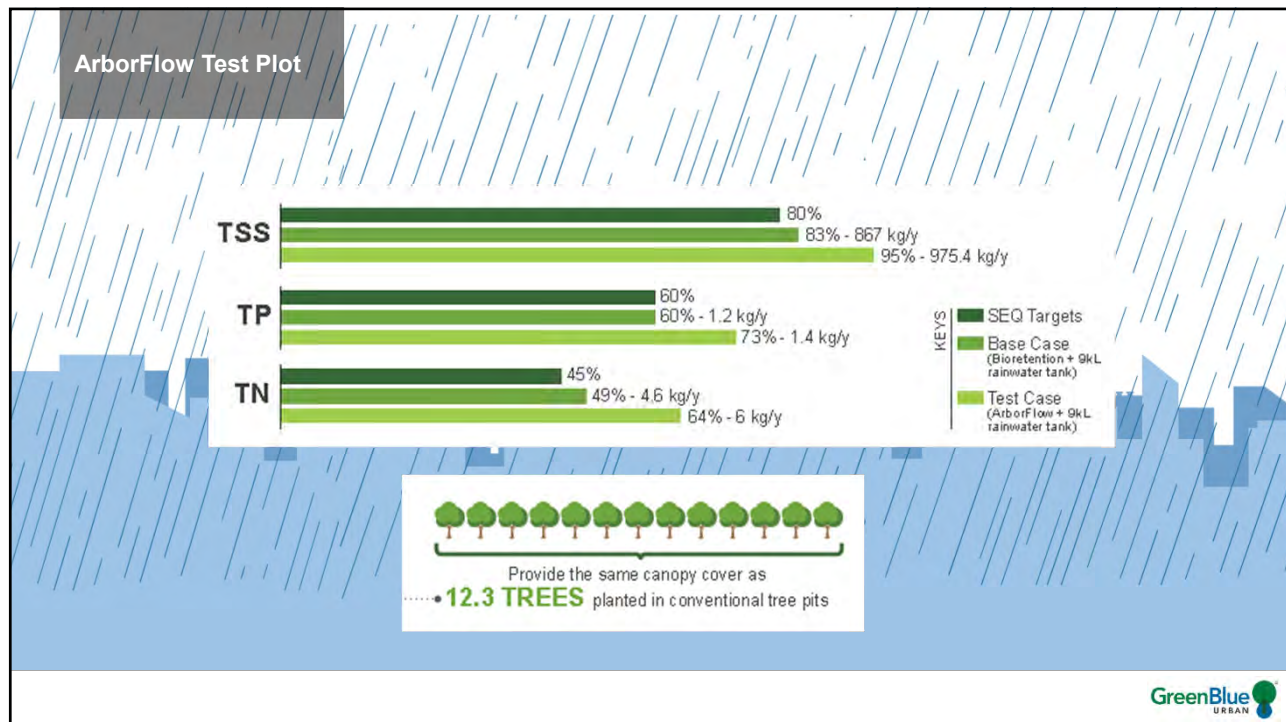
ArborFlow Test Plot

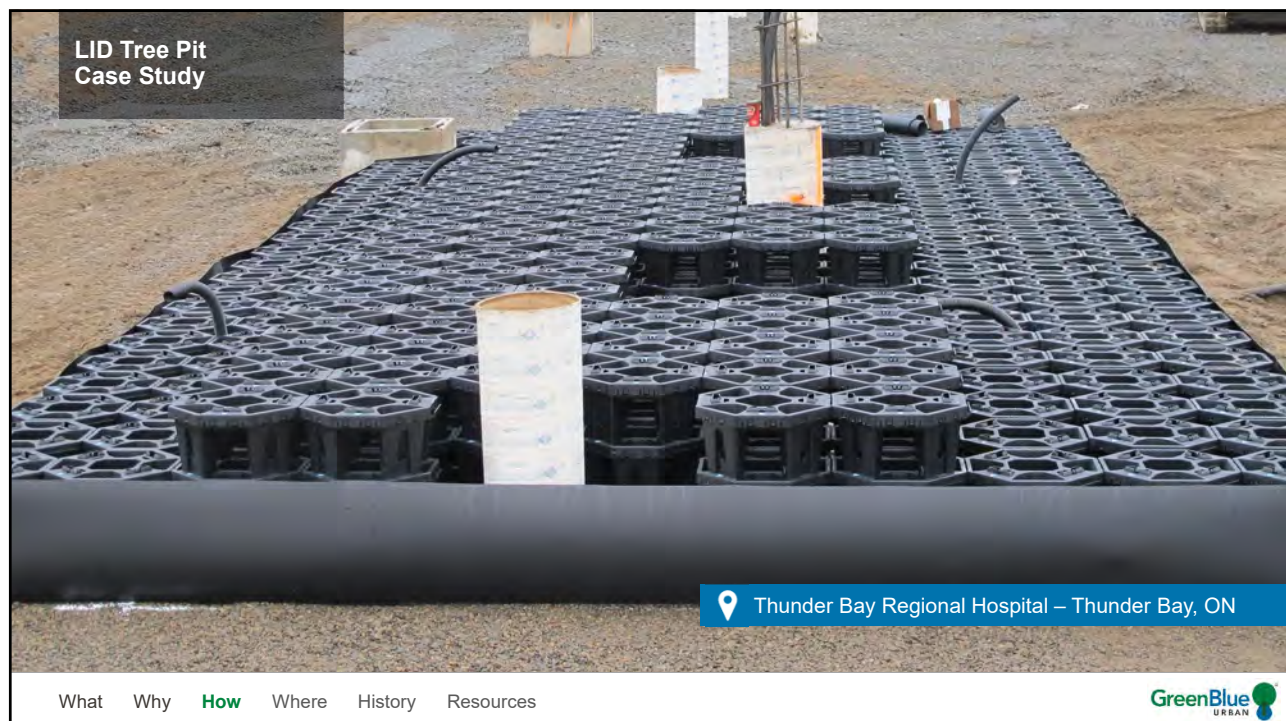
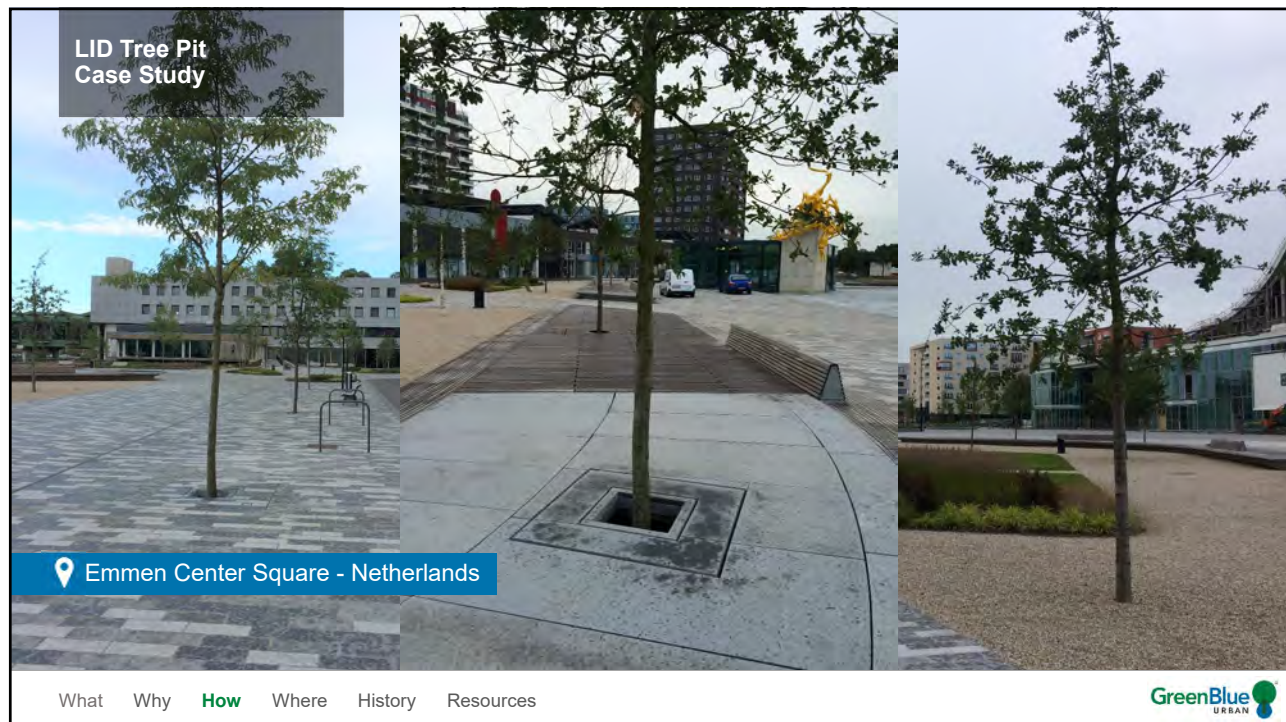
GreenBlue
URBAN

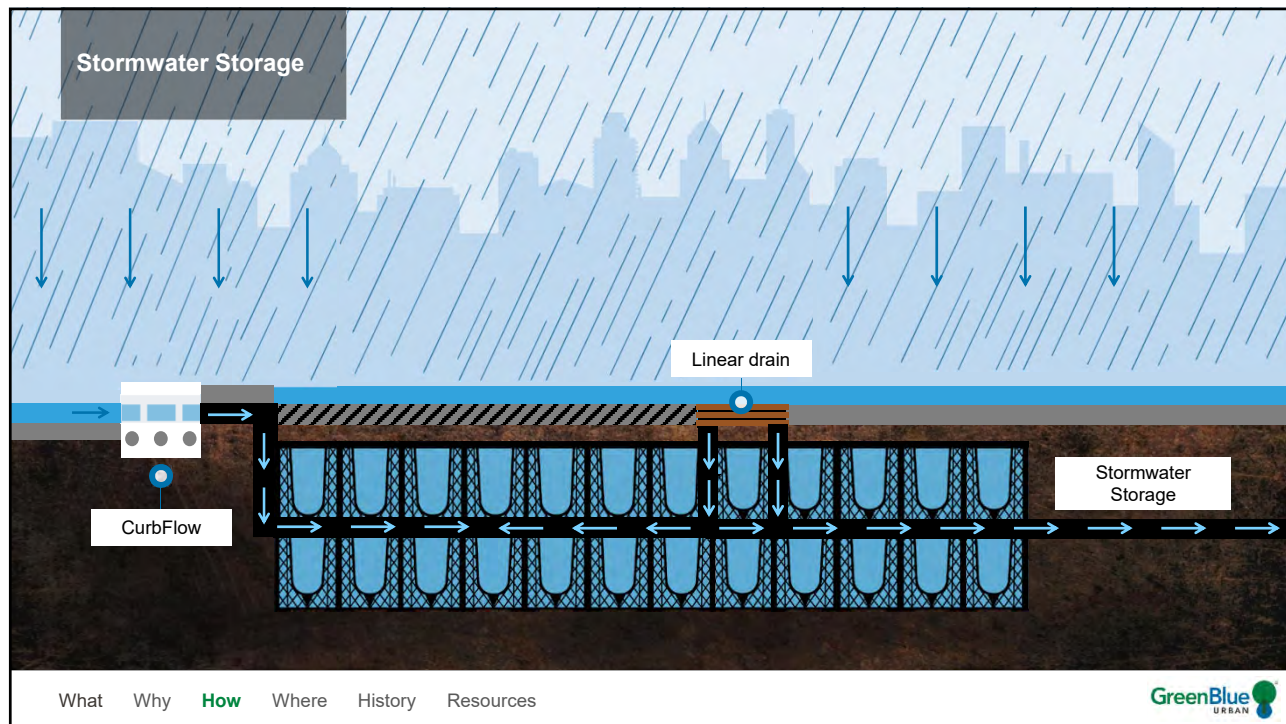
ArborFlow Test Plot

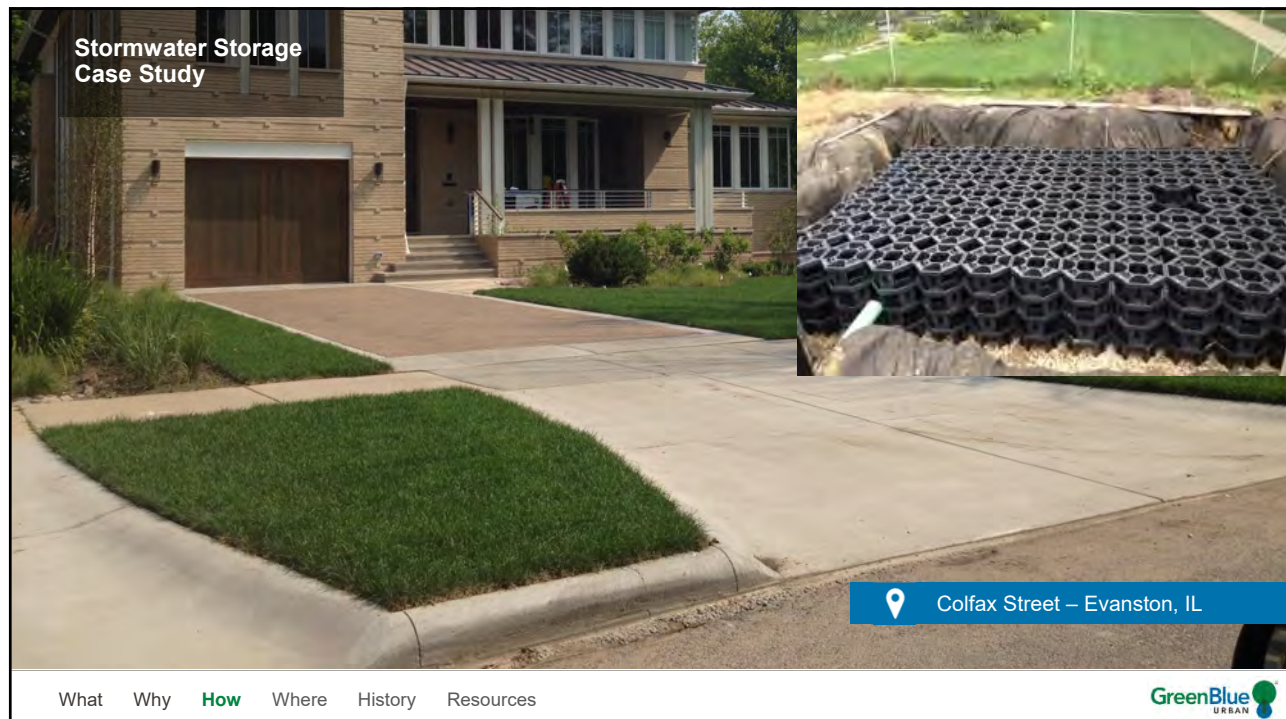
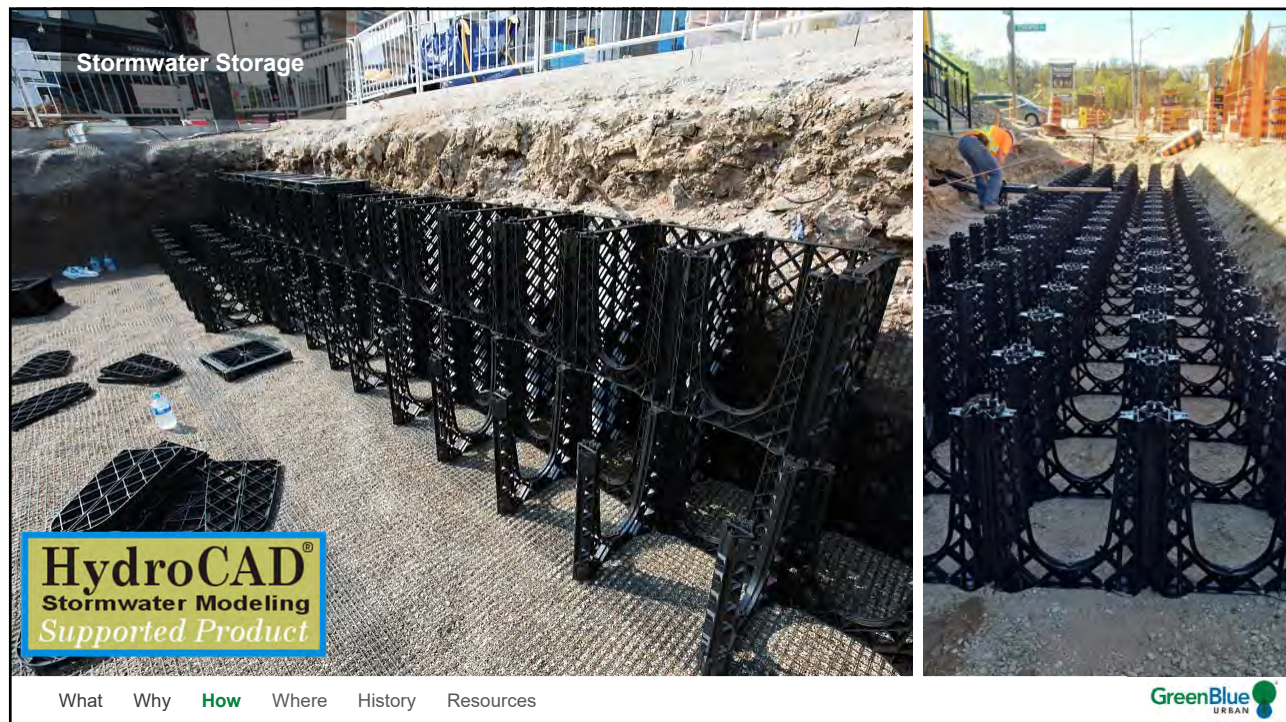
GreenBlue
URBAN



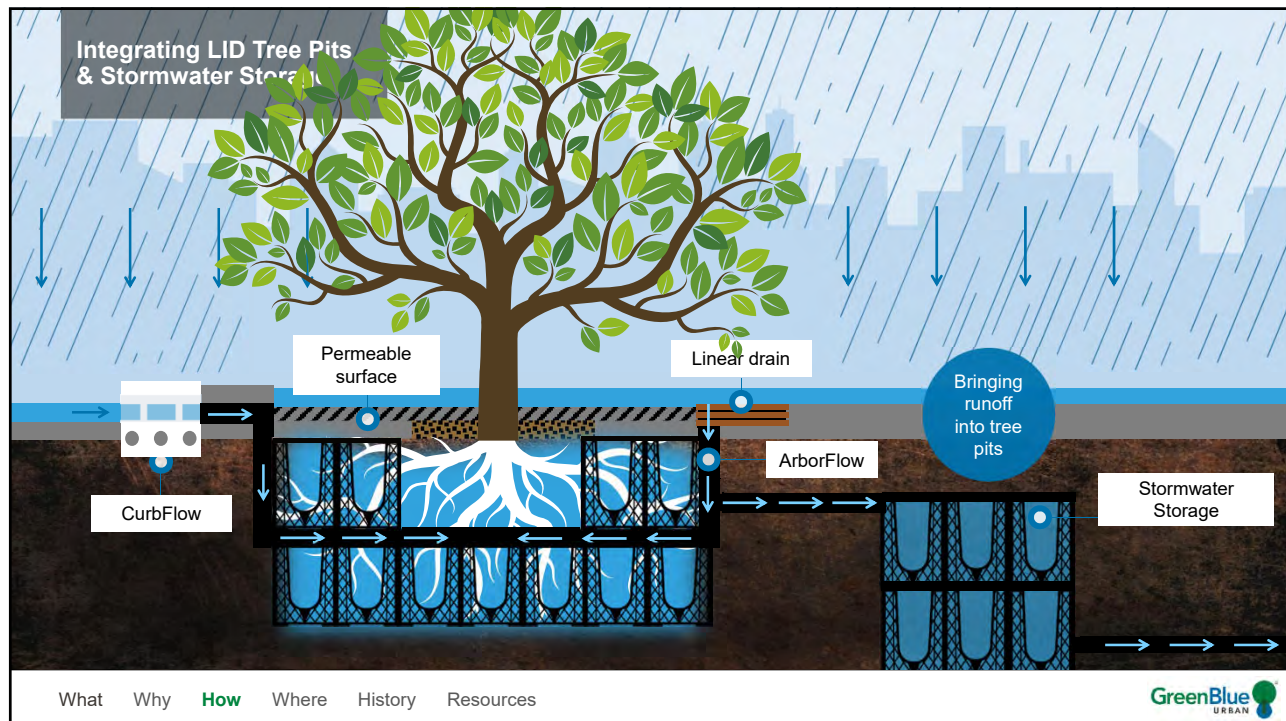


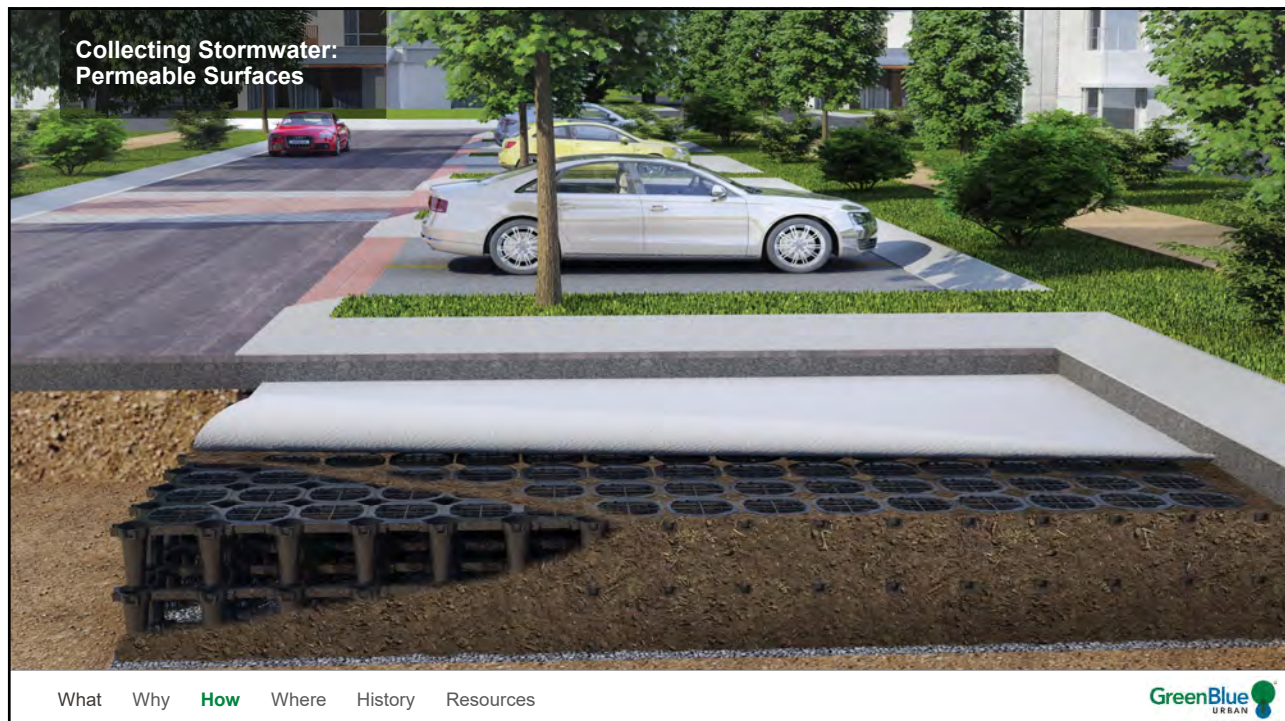
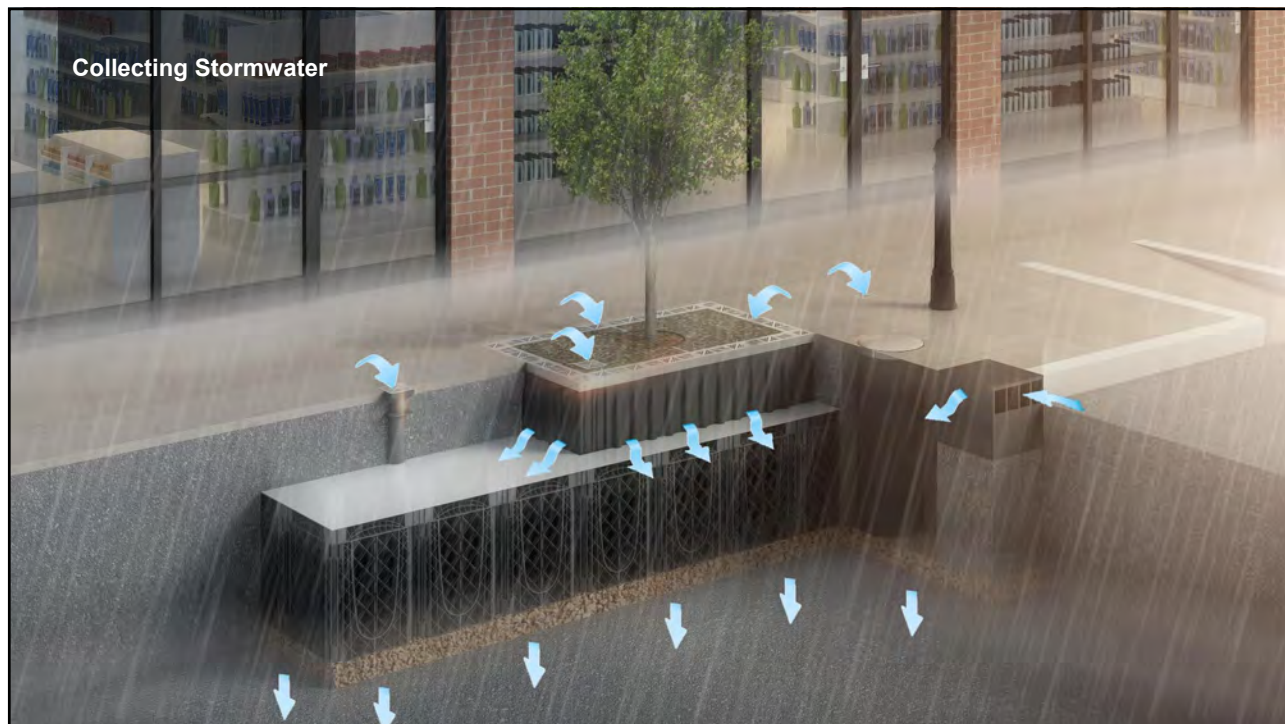


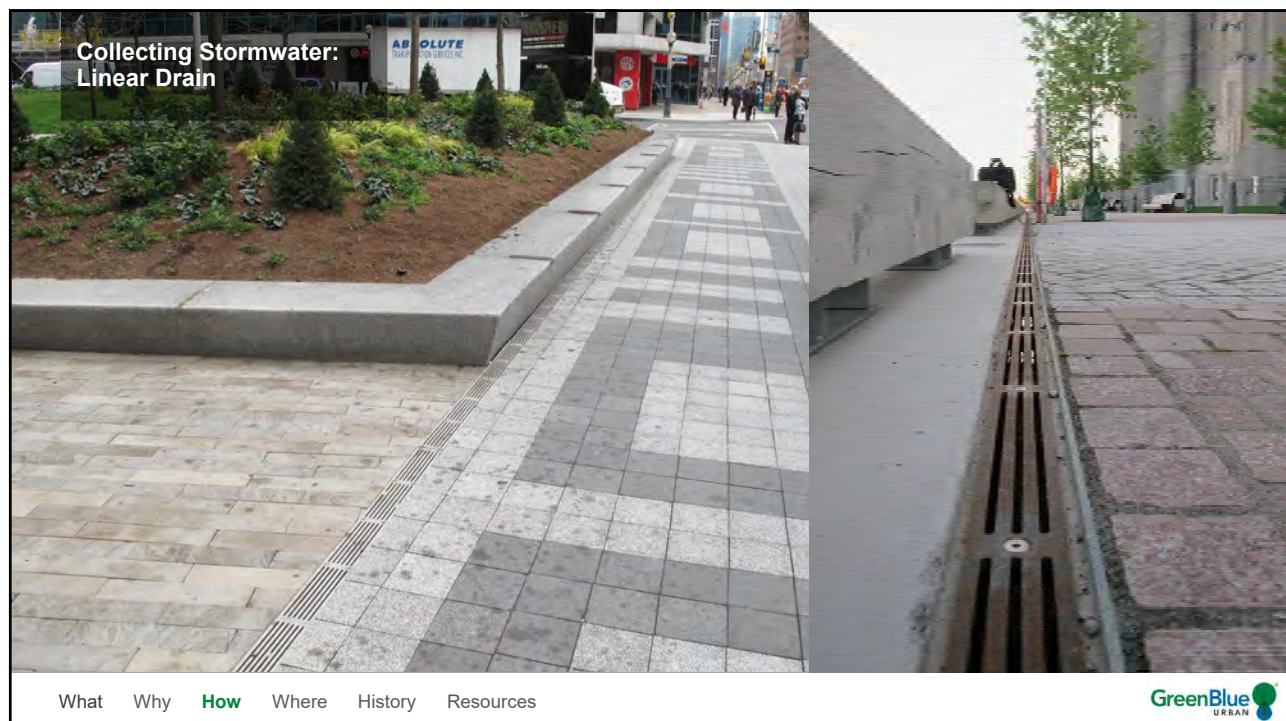
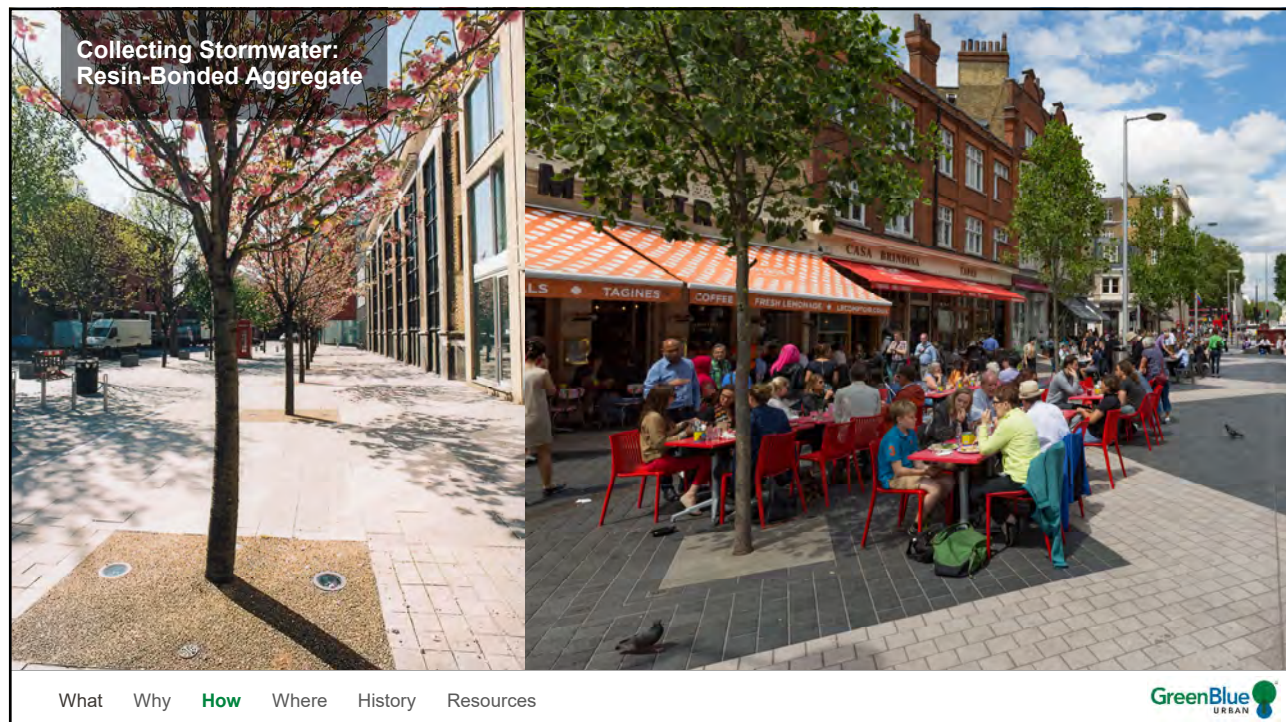


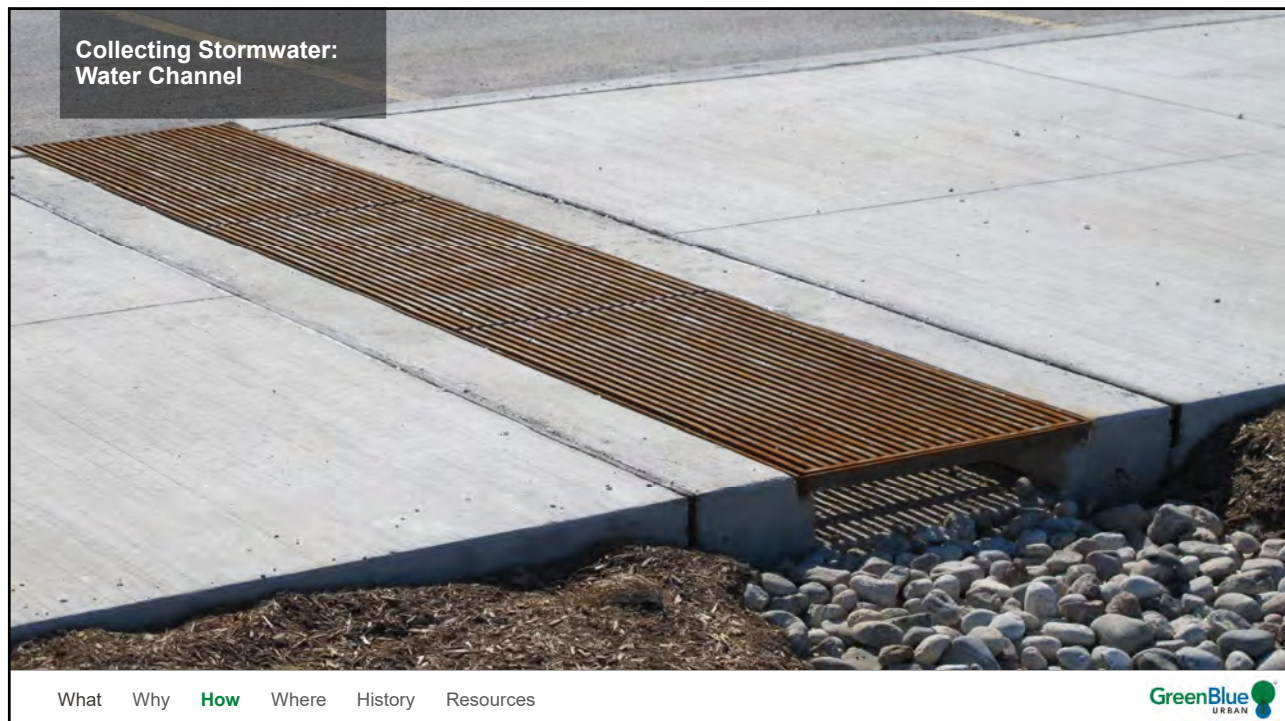


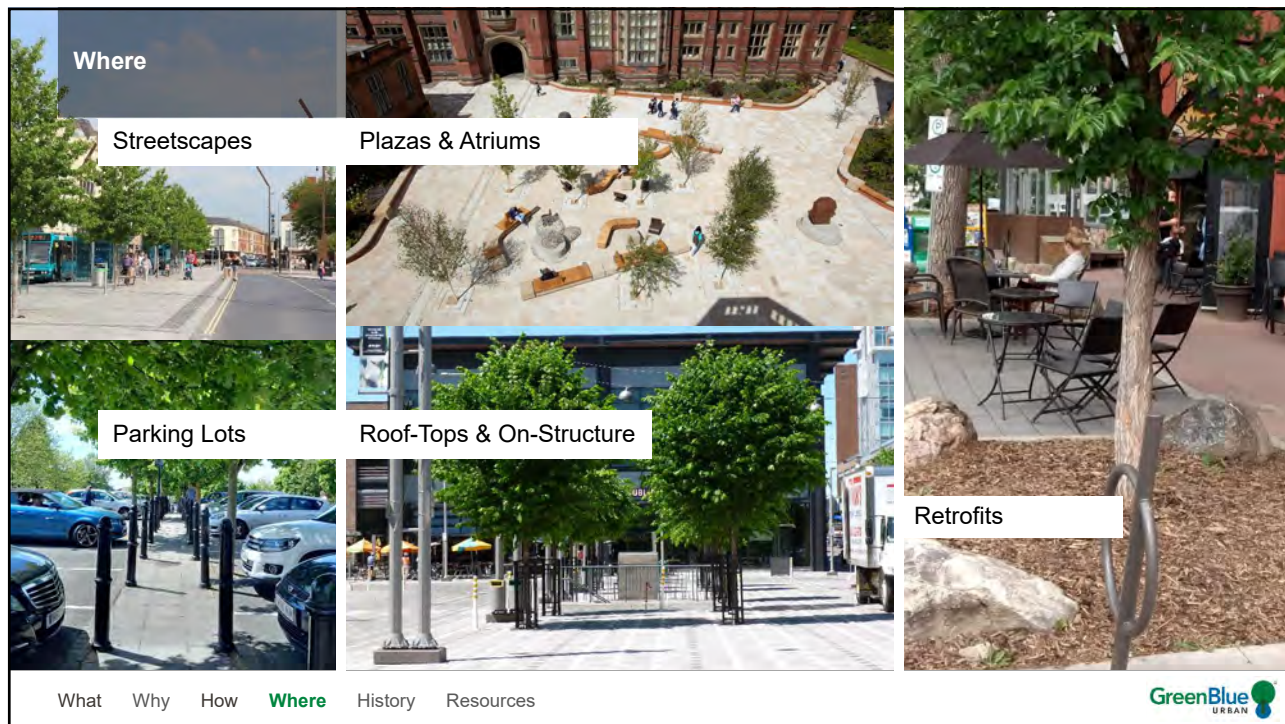
Integrating LID Tree Pits & Stormwater Storage

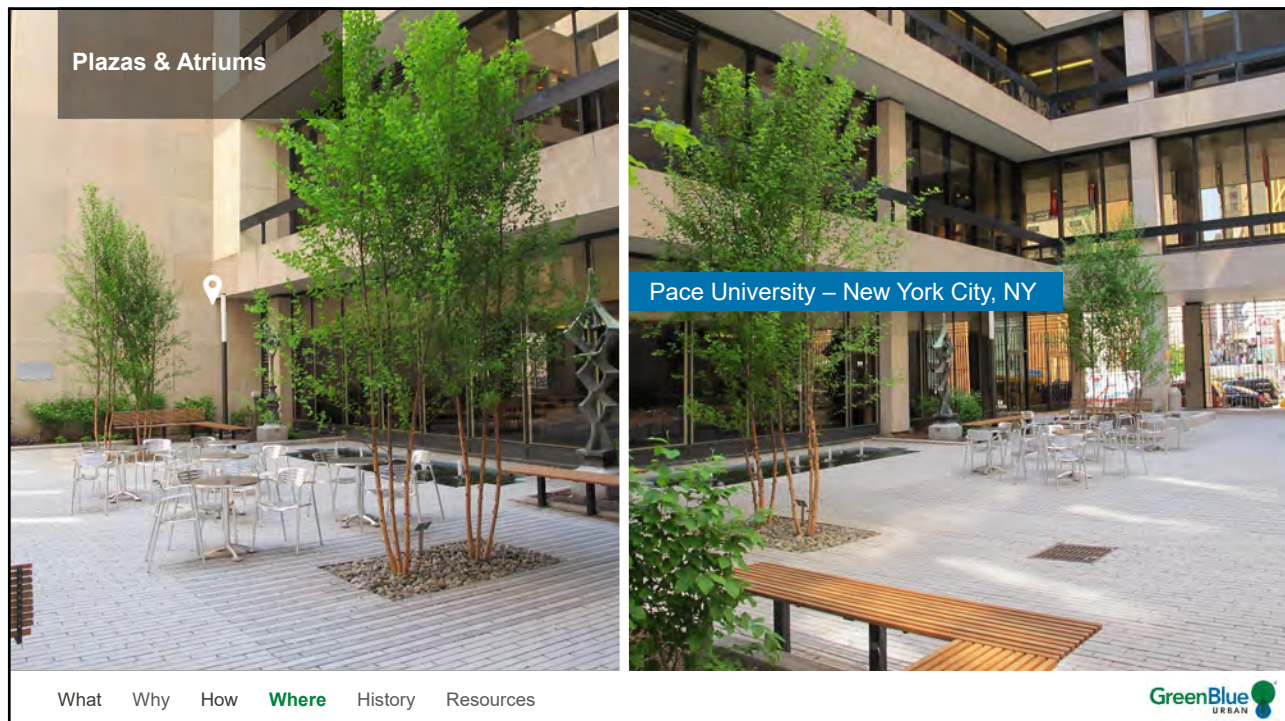
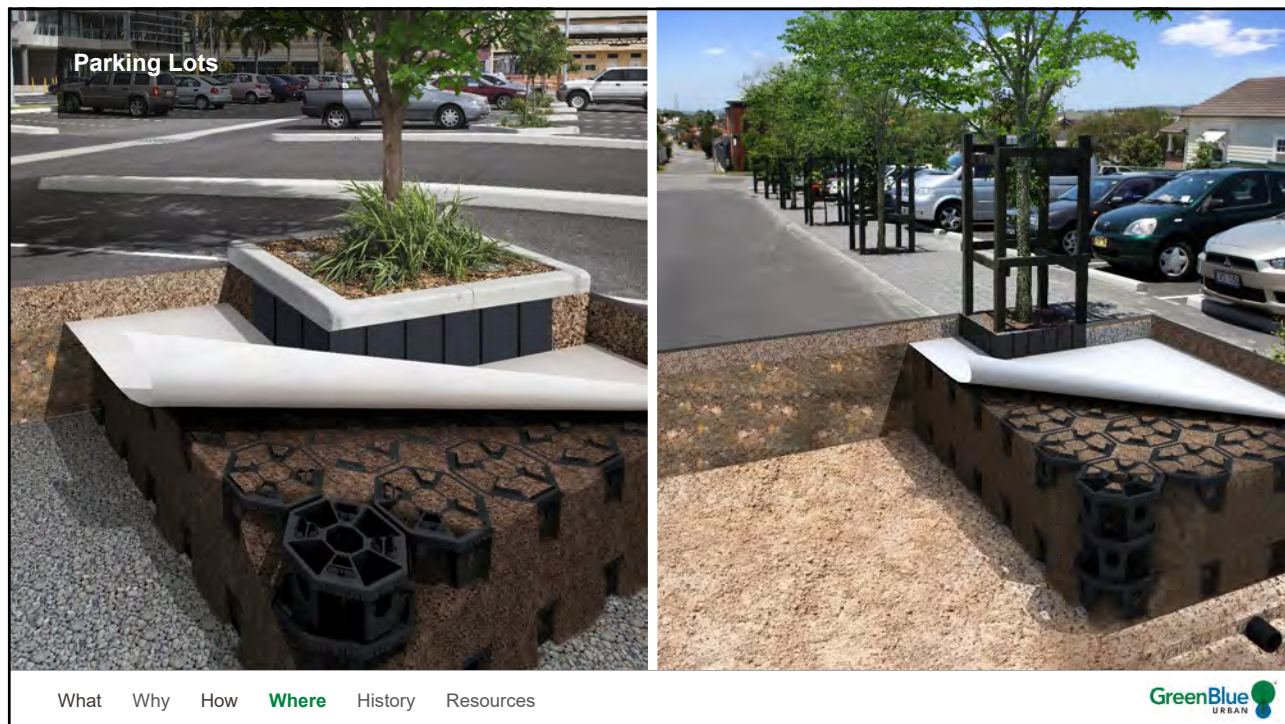


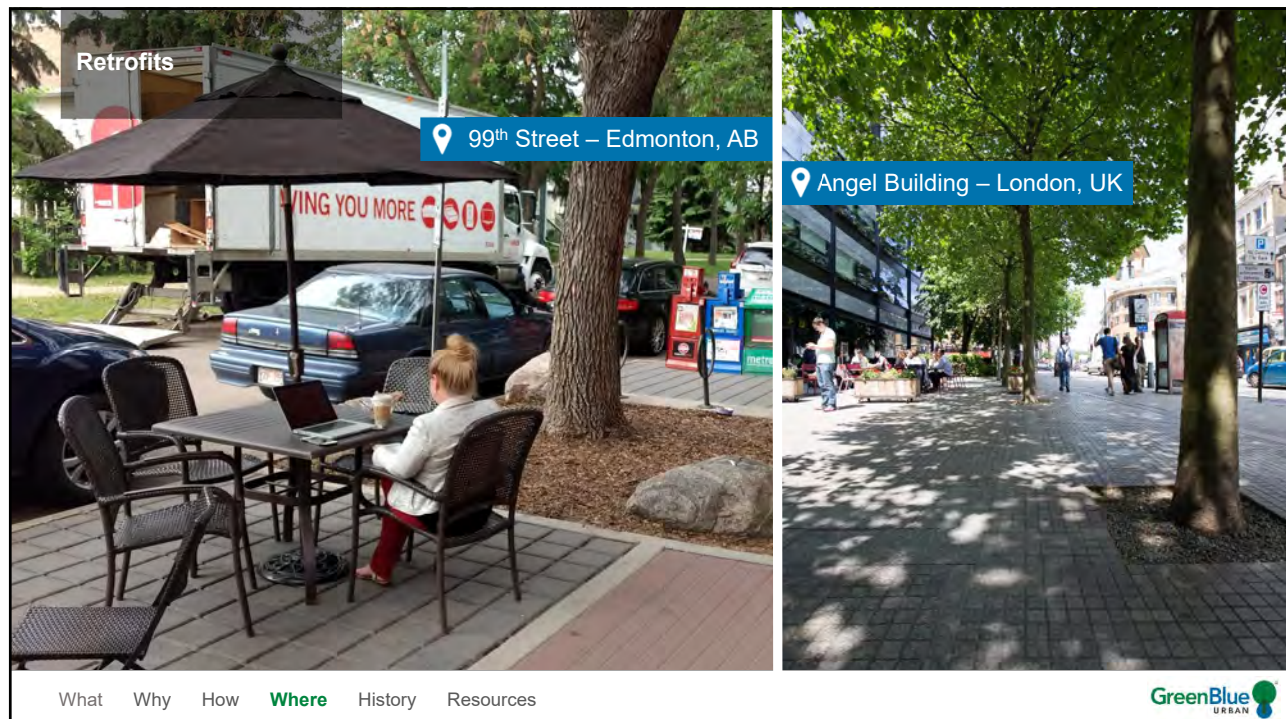












Tree Plantings with the World's First Soil Cells

First tree ever planted in soil cells (1999)

Blackheath Hill – London UK (2001)

St Paul's Cathedral – London UK (2003)

What Why **How** Where History Resources

GreenBlue URBAN

