

Contacts



Original publication: Southeast Michigan Regional IDEP Work Group

Spotting Illicit Discharges

Pollution detection of sediment, nutrients, oil and bacteria that can drain to lakes and streams through storm drains.



REPORT THESE ITEMS:

- Spills and contamination to lakes, rivers and streams
- Suspicious dumping to waterways
- Unusual discharges from pipes
- Sewage on the ground or draining to water bodies
- Large number of dead fish in waterways
- Failing or leaky septic systems
- Polluted runoff from storage piles or dumpsters into waterways
- Sewage, detergent, chemical, petroleum or rotten egg odors
- Soil erosion from construction sites

Sanitary/Septic Sewer Discharges

Observations:

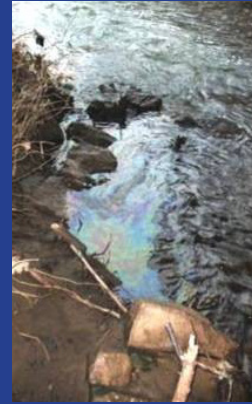
- Sanitary debris/paper
- Staining on pipe
- Soap suds
- Gray or colored water
- Strange odors



Illegal Dumping & Spills

Observations:

- Oil sheen
- Stained rocks or vegetation
- Odor: petroleum or chemical
- Odor or color
- Many dead fish
- Trash in ditch or stream



Construction Site Runoff

Observations:

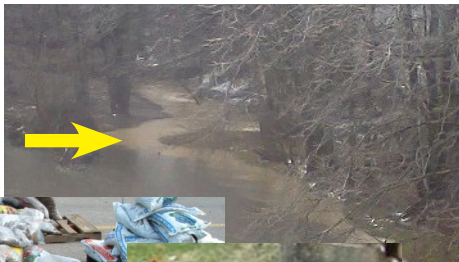
- Soil leaving site
- Sediment flow to storm drain inlet



Industrial Discharges

Observations:

- Loose debris
- White foam
- Odor
- Color



Nutrients /Fertilizer

Observations:

- Excessive algae growth



Call authorities immediately