



# Before the Storm

Indiana Association for Floodplain and Stormwater Management

SPRING 2014

2014 INAFSM  
ANNUAL  
CONFERENCE  
SEPTEMBER 10-12



ABE MARTIN LODGE  
BROWN COUNTY  
STATE PARK

RESERVE YOUR  
LODGING NOW

## INSIDE THIS ISSUE:

High Water 2  
Mark Training

Wildcat Expe- 2  
rience

EnviroCert 3  
Exam Dates

Floodplain 3  
Training Op-  
portunities

Stormwater 3  
Training Op-  
portunities

## 2014 Annual Conference - Come Join Us!



There is still time to register for the 2014 INAFSM Annual Conference. The event begins Wednesday, September 10th and runs through Friday, September 12th at the Abe Martin Lodge in the

Brown County State Park. [Online registration](#) remains available until September 3rd.

Join your colleagues for a number of education and social opportunities. Start off the conference with a half day of education and then join us Wednesday evening for the Dinner Banquet and entertainment. Thursday includes a full day of floodplain, MS4, and stormwater education and concludes

with a casual dinner and networking opportunity. The conference is capped off Friday with a half day of sessions.

All meals are included with the price of registration. There are also Guest Meal packages available. Options to purchase meal plans are included on the registration page. Meals included are:

- Wednesday Evening drinks and hors d'oeuvres
- Wednesday dinner
- Thursday continental breakfast
- Thursday morning and afternoon beverages and snacks
- Thursday lunch
- Thursday evening drinks
- Thursday evening dinner and entertainment
- Friday morning breakfast buffet

There is also an option to purchase guest meal packages just for the Thursday night dinner separately.

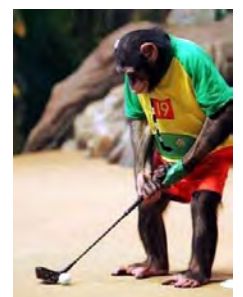
## INAFSM ANNUAL GOLF SCRAMBLE

For those that want to enjoy a little relaxation before the conference begins, come out and join the INAFSM Annual Golf Outing. This year's golf scramble will be held at the Salt Creek Golf Club in Nashville, Indiana on Tuesday, September 9th. The golf club is located on State Road 46, just east of the entrance to the Brown County State Park.

Five tee times have been reserved beginning at

1:00 pm. Those that arrive early have the option to join the group for lunch (on your own) at the 19th Hole Bar and Grill, located in the Salt Creek Clubhouse.

Those interested in participating should email [John Crist](#) to reserve a spot.





## High Water Mark Training

The INAFSM Floodplain Committee in cooperation with the Maumee River Basin Commission (MRBC), held a High Water Mark Training and Flood Inundation Mapping Training on Wednesday May 28<sup>th</sup> at the Noble County Public Library. The venue was relocated to the library due to the registrations exceeding the room capacity of the Noble County Emergency Management Agency Conference Room.

Forty-eight participants attended the all-day training which received high praises for the caliber of training provided. Presenters were David Knipe, IDNR-DOW, Zach Martin, Moon Kim, Chad Menke, all representing IN-USGS, and Mary Weidel, USACE. The INAFSM Floodplain Committee and MRBC thanks all presenters for their awesome presentations.

If you are interested in hosting a high water mark training session in your area, please contact Sky Medors at [fp@inafsm.net](mailto:fp@inafsm.net).

- Rod Renkenberger



## WILDCAT EXPERIENCE OFFERS HANDS-ON STORMWATER EDUCATION

INAFSM members joined employees of the Howard County Stormwater District Friday, June 27 for what has been dubbed as The Wildcat Experience. The canoe trip and stormwater workshop for INAFSM members provided a glimpse into a program that is geared toward educating the community about stormwater runoff and responsible stewardship of Indiana's water resources.

A true Wildcat Experience combines a canoe trip with speaker presentations that relate to stormwater management, and broader envi-

ronmental issues. The Howard County Stormwater District trips often involve high school science students as well as adult sponsors, providing the opportunity to educate community leaders of today and tomorrow.

Because this workshop was geared more toward INAFSM members who may consider starting similar education programs in their communities there was discussion about how to organize a similar workshop. Some of the highlights included how to successfully obtain sponsorships, discussion on legal and financial issues to consider, equipment needs and considerations, etc.

During the paddling portion of the workshop we performed outfall monitoring from a canoe where the drains were easily visible, and even spotted some gray water along the way that had to be reported. All in all it was a really fun day on the water. If you have questions about starting a similar program, contact the Howard County Stormwater District at 765-456-2217.

-Karen Avery

# EnviroCert Exam Dates

INAFSM, with EnviroCert International and the Indiana Conservation Partnership, is offering a certification exam on October 3, 2014 for the following: [CPESC](#), [CESSWI](#), [CMS4S](#), and [CPSWO](#). The exam review session for these certifications has already passed, but you still have time to apply for the exam. Exam registration cutoff is September 19, 2014.

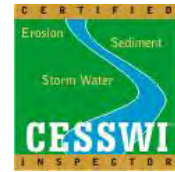
You must be pre-approved by and register with EnviroCert International to take the exam at this session. Please remember that it can take up

to 45 days for application approval. EnviroCert International will send you a letter stating whether your approval or denial. You will need to present the approval letter to the proctor for the exam.

If you have specific questions about a particular certification, please direct them to the respective certification program manager (contact info can be found using the links on the INAFSM Stormwater committee page).

Fees are provided on the [registration](#)

[forms](#). Registration cutoff is September 19, 2014.



## Floodplain Training Opportunities

Joining us for the 2014 INAFSM Conference September 10-12? If not, all other training opportunities may be found on the INAFSM website along with applicable flyers and links to the organizations website.

ASFPM has just announced two new webinars. Members can find a member promo code on their ASFPM online account.

October 10 — [Finding the Base Flood Elevation](#)

October 15 — [Ethics in Floodplain Management](#)

Are there any training opportunities that you know of and would like to share with other members? Please contact the Outreach Chair at [outreach@inafsm.net](mailto:outreach@inafsm.net) with the information.

*A complete list of all training opportunities may be found on the INAFSM Calendar of Events at INAFSM.net*

## Stormwater Training Opportunities

Joining us for the 2014 INAFSM Conference September 10-12? If not, all training other opportunities may be found on the INAFSM website along with applicable flyers and links to the organizations website. Check in from time to time for new listings.

Are there any training opportunities that you know of and would like to share with other members? Please contact the Outreach Chair at

[outreach@inafsm.net](mailto:outreach@inafsm.net) with the information.





101 West Ohio Street, Suite 1575  
Indianapolis, Indiana 46204

Phone: 317-829-3656  
E-mail: [info@inafsm.net](mailto:info@inafsm.net)  
[kavery@inafsm.net](mailto:kavery@inafsm.net)  
Website: [www.inafsm.net](http://www.inafsm.net)

**BEFORE THE STORM** is published four times a year by **INAFSM** and is funded by membership dues. Reproduction with credit is permitted.

**INAFSM** encourages interested parties to contribute articles, photographs, and other items of interest for publication. Items and other editorial matters should be directed to:

**INAFSM OUTREACH CHAIR**

Denise Aschleman  
[outreach@inafsm.net](mailto:outreach@inafsm.net)

The opinions contained in certain articles are those the individual author(s) and do not necessarily reflect the opinions of the **INAFSM Board** and/or its members. **INAFSM** reserves the right to edit material prior to publication.

**“ A unique opportunity for anyone involved with floodplain and stormwater management.”**

**2014 Executive Board Members  
and Staff**

**CHAIR**

Zachariah Beasley  
[chair@inafsm.net](mailto:chair@inafsm.net)

**VICE CHAIR**

Kenny Hale  
[vicechair@inafsm.net](mailto:vicechair@inafsm.net)

**SECRETARY**

Michael Sears  
[secretary@inafsm.net](mailto:secretary@inafsm.net)

**TREASURER**

Joseph Miller  
[treasurer@inafsm.net](mailto:treasurer@inafsm.net)

**PAST CHAIR**

Daryl Helfert  
[pastchair@inafsm.net](mailto:pastchair@inafsm.net)

**EXECUTIVE DIRECTOR**

Karen Avery  
[kavery@inafsm.net](mailto:kavery@inafsm.net)

**2014 Standing Committee Chairs and  
Ad-Hoc Committee Chairs**

**FLOODPLAIN CHAIR**

Sky Medors  
[fp@inafsm.net](mailto:fp@inafsm.net)

**STORMWATER CHAIR**

Greg Lake  
[sw@inafsm.net](mailto:sw@inafsm.net)

**AWARDS CHAIR**

Rod Renkenberger  
[awards@inafsm.net](mailto:awards@inafsm.net)

**CRS CHAIR**

—Vacant—

**OUTREACH CHAIR**

Denise Aschleman  
[outreach@inafsm.net](mailto:outreach@inafsm.net)

**CONFERENCE CHAIR**

Kenny Hale  
[vicechair@inafsm.net](mailto:vicechair@inafsm.net)

**CONFERENCE PROGRAM  
CHAIR**

Manuela Johnson  
[mjohnson@dhs.in.gov](mailto:mjohnson@dhs.in.gov)

**2014 Liaisons**

**NFIP LIAISON**

Greg Main  
[nfip@inafsm.net](mailto:nfip@inafsm.net)

**IDNR LIAISON**

Debra Smith  
[idnr@inafsm.net](mailto:idnr@inafsm.net)

**USGS LIAISON**

Scott Morlock  
[usgs@inafsm.net](mailto:usgs@inafsm.net)

**DHS LIAISON**

Jan Crider  
[dhs@inafsm.net](mailto:dhs@inafsm.net)

**LEGISLATIVE LIAISON**

Kenton C. Ward  
[legislate@inafsm.net](mailto:legislate@inafsm.net)

**IDEM LIAISON**

Randy Braun  
[idem@inafsm.net](mailto:idem@inafsm.net)

**CWP LIAISON**

Lori Gates  
[cwp@inafsm.net](mailto:cwp@inafsm.net)