



Before the Storm

Indiana Association for Floodplain and Stormwater Management

SUMMER 2016

Where We've Been. Where We're Going. Twenty Years and We're Still Growing.

2016 INAFSM
ANNUAL
CONFERENCE
SEPTEMBER 7-9
BELTERRA CONFER-
ENCE CENTER

PLEASE JOIN US
FOR THIS SPECIAL
20TH ANNIVERSARY
EVENT!

INSIDE THIS ISSUE:

- What Do I 2
Get With My
Conference
Registration
- The New 2
Indiana Peak
Discharge
Determina-
tion System
- Markland 3
Locks & Dam
Tour
- Floodplain 3
Training Op-
portunities
- Stormwater 3
Training Op-
portunities



The conference planning committee is hard at work putting the finishing touches on the 2016 Annual Conference. The conference will be at the beautiful Belterra Conference Center in Florence September 7-9. As the 20th Anniversary Conference there has been a lot of extra recognitions and surprises to celebrate the history of the organization. Make sure to come out and see all the special things that the committee has planned.

Registration

Be sure to register for the conference soon. The early bird registration rate of \$225 for members increases on July 27 to \$255. While registering for the conference be sure to call Belterra Conference Center and reserve your room in the reserved room block. Be sure to use **Group Code S09161A** when you call **1-888-235-8377** to ensure the conference room rate of \$89 per night.

Schedule a Mini-Vacation

On Wednesday, September 7th the Switzerland County Tourism will be in the hotel with information on the local attractions that your family can enjoy while you enjoy all the conference sessions. With attractions like the Ridge Winery, Dutch Discount, the Farmers and Artisans Marketplace, and the Schenck Mansion Bed and Breakfast Inn there will be plenty of activities for the family to enjoy. There are also amenities at the conference center that include a spa, golf course, pool, and shopping.

Early Bird Events

The festivities relating to the conference begin on **Tuesday, September 6th** with the Conference Golf Outing. The day will start off with lunch (on your own) at the Out of Bounds Bar & Grill. With a **12 pm tee time**, you will begin 18 holes with a GPS enabled cart. The outing will take place on the Belterra Golf Course designed by Tom Fazio and was created to highlight the natural surroundings of the Belterra Conference Center and Resort. Cost for this afternoon of golf is \$65 per golfer payable at the clubhouse. For further information or any questions, please contact Jon Crist at (765) 744-1184.

Greg Main Memorial Blood Drive

A new event this year is the Greg Main Memorial Blood Drive. On **Tuesday, September 6th from 6-10 pm** a Bloodmobile from Indiana Blood Center will be located in the parking lot of the Belterra Conference Center. The easiest way to participate is by making an appointment, but walk-ins will also be accepted. Approximately one month before the Blood Drive you will be able to log onto the Indiana Blood Center website to schedule an appointment. Please keep in mind that to participate you can not have donated within the past 56 days. This event is just being finalized so check the website for more details.



What Do I Get With My Registration Fee

Your \$225 conference registration fee includes the following items:

- 4 Plenary sessions on topics ranging from wetlands restoration to resilience to watershed initiatives
- Choice between 4 sessions in 15 session times
- Markland Locks and Dam Tour
- Admission to the sponsor/vendor displays
- Admission to all social and entertainment events
 - Vendor Showcase Reception
 - INAFSM 20th Anniversary Celebration
 - Thursday Evening cookout featuring live music & games with transportation to the off-site location
- All Meals during conference
 - Wednesday Box Lunch
 - Hors D’oeuvres & a Cocktail
 - Wednesday hot buffet dinner
 - Thursday hot breakfast buffet
 - Thursday hot buffet lunch
 - Thursday evening cookout
 - Friday hot breakfast buffet

Reserve your rooms for the 20th Anniversary Conference today! Call 1-800-235-8377 and use group code S09161A to qualify for the INAFSM conference rate of \$89 per night.

Introducing the New Indiana Peak Discharge Determination System (IPDDS)

The IPDDS is a new web based application to generate flood frequency peak discharge values for streams in Indiana. With the development of StreamStats by USGS, GIS technology, and the Internet, the programs were adapted for general use.

The IPDDS is an ArcGIS server application that allows a user to select a site, and receive back a computation of watershed statistics from StreamStats, and a series of previous determinations from the IDNR’s UNITY database. This information can then be downloaded into an Excel spreadsheet and a peak discharge estimation developed.

The general use of IPDDS eliminates the procedure of DNR Division of Water estimating the flood-frequency peak discharges for stream sites based on a written request for a point of interest. However, the Division of Water will need to review estimated peak discharges prior to use in most cases. Please see page 2 of the full Announcement for exceptions.

For information on the determination process, interpreting the results, and requesting a review and concurrence from DNR Division of Water, review the instructions on page 2 of this Announcement. Additional instructions can be found in contents in tabs on the webpage under *Using the IPDDS, Interpreting Results, and Resources*.

Indiana Department of Natural Resources

Division of Water
402 W Washington St Room W264
Indianapolis, IN 46204

Phone: (317) 232-4160
Toll Free: (877) 928-3755

For questions on IPDDS email the Division of Water at water_inquiry@dnr.in.gov or call and select Ext. 1 from the main menu.

IPDDS Webinar

To receive more information about the new IPDDS application, plan to join the IPDDS Webinar.

Date: Monday July 11, 2016

Time: 1:00—2:00 pm EST

Location: https://dnr.adobeconnect.com/water_esc/
(no phone—all audio will be through web)

Presented by David Knipe, PE, Engineering Services Central Basin Section Manager, DNR, Division of Water

Markland Locks and Dam Tour at Annual Conference

One of the special items that the Conference Committee has been working on is a tour of the Markland Locks and Dams. Currently there are two tours of the project scheduled: one on Wednesday, September 7th at 9:00 am and one on Friday, September 9th at 1:30 pm. The tours will last approximately 1 hour and space is limited.

There is space for 30 attendees at each tour. Transportation to the site is on your own, but with limited parking available at the site you are encouraged to carpool. Some areas of the tour are not ADA accessible, but special arrangements may be made so those with disabilities may still attend. Those participating in the tour must have the following:

- Long pants
- Closed toe shoes
- Shirts with short or long sleeves (no sleeveless)
- Valid form of identification

This is a tour that families may participate in, but anyone under the age of 18 would not be allowed on the lock walls. Those under 18 are welcome to stay in the visitor area during that portion of the tour.

This is a concrete dam bridge and locks that span 1395 feet over the Ohio River connecting Gallatin County, Kentucky, and Switzerland County, Indiana. Construction on the locks began in March 1956 and became operational in May 1959 while the dam construction began in April 1959 and was finished in April 1974. There is currently a license for Duke Energy to operate a hydroelectric power plant at the dam with a capacity of 81,000 kva.

We ask that you pre-register for the tour. Details are still being finalized, so watch the website for details on registration. If demand for these tours is high, the committee will try to arrange additional tour times, but must have advance notice for this to be possible.

Floodplain Training Opportunities

July 11-14 — [Advanced Floodplain Management Concepts II](#) (EMI — E0282)

July 18-21 — [The Community Rating System](#) (EMI — E0278)

August 9-12 — Managing Floodplain Development Through the NFIP (Indianapolis)

September 12-15 — [Managing Floodplain Through the NFIP](#) (EMI — E0273)

September 19-22 — [The Community Rating System](#) (EMI — E0278)

Are there any training opportunities that you know of and would like to share with other members?

Please contact the Outreach Chair at outreach@inafsm.net with the information.



A complete list of all training opportunities may be found on the INAFSM Calendar of Events at INAFSM.net

Stormwater Training Opportunities

July 19 & 21 — [Stream Restoration Basics and Techniques](#) (Webinar)

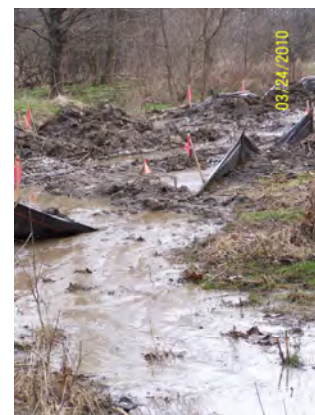
July 20 — [Get Smart! Cut Maintenance Costs with Smart Pump Technology](#) (Webinar)

July 28 — [Flood Best Practices: Protecting People & Property with GIS](#) (webinar)

[10 Steps to Construction Site Stormwater Compliance](#) (webinar)

[5 Steps to Creating a Successful Public Outreach Campaign](#) (Webinar)

Are there any training opportunities that you know of and would like to share with other members? Please contact the Outreach Chair at outreach@inafsm.net with the information.





101 West Ohio Street, Suite 1575
Indianapolis, Indiana 46204

Phone: 317-829-3656
Email: info@inafsm.net
kavery@inafsm.net
Website: www.inafsm.net

BEFORE THE STORM is published four times a year by **INAFSM** and is funded by membership dues. Reproduction with credit is permitted.

INAFSM encourages interested parties to contribute articles, photographs, and other items of interest for publication. Items and other editorial matters should be directed to:

INAFSM OUTREACH CHAIR
Denise Aschleman
outreach@inafsm.net

The opinions contained in certain articles are those of the individual author(s) and do not necessarily reflect the opinions of the **INAFSM** Board and/or its members. **INAFSM** reserves the right to edit material prior to publication.

“Promoting sustainable floodplain and stormwater management”

2016 Executive Board Members and Staff

CHAIR

Kenny Hale
chair@inafsm.net

VICE CHAIR

Lori Gates
vicechair@inafsm.net

SECRETARY

Joseph Miller
secretary@inafsm.net

TREASURER

Michael Sears
treasurer@inafsm.net

EXECUTIVE DIRECTOR

Karen Avery
kavery@inafsm.net

2016 Representatives and Committee Chairs

NORTH REGION

Randy Sexton
north@inafsm.net

CENTRAL REGION

Larry Aukerman
central@inafsm.net

SOUTH REGION

Susan Bodkin
south@inafsm.net

FLOODPLAIN CHAIR

—Vacant—

STORMWATER CHAIR

Toni Cecil
sw@inafsm.net

2016 Advisory Committee Chairs

PAST CHAIR

Zachariah Beasley
pastchair@inafsm.net

AWARDS CHAIR

Rod Renkenberger
awards@inafsm.net

CRS CHAIR

—Vacant—

CONFERENCE CHAIR

Lori Gates
cwp@inafsm.net

LEGISLATIVE CHAIR

Kenton C. Ward
legislate@inafsm.net

OUTREACH CHAIR

Denise Aschleman
outreach@inafsm.net

2016 Liaisons

IDNR

Debra Smith
idnr@inafsm.net

USGS

Zack Martin
usgs@inafsm.net

IDHS

Mary Moran
mmoran@dhs.in.gov

IDEM

Randy Braun
idem@inafsm.net

NFIP

Anita Nance
nfip@inafsm.net

INDOT

Dave Finley
dfinley@indot.in.gov